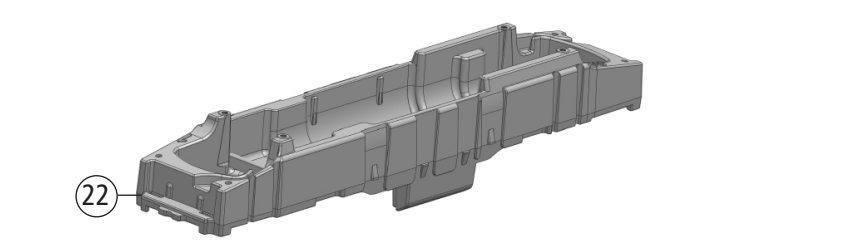
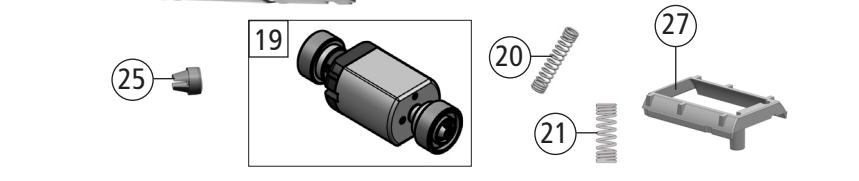
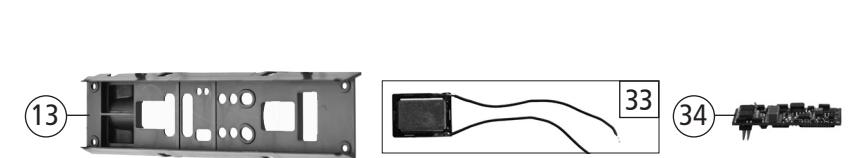
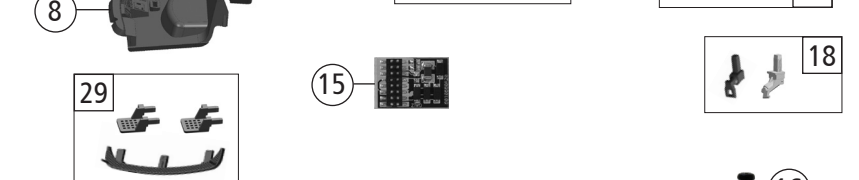
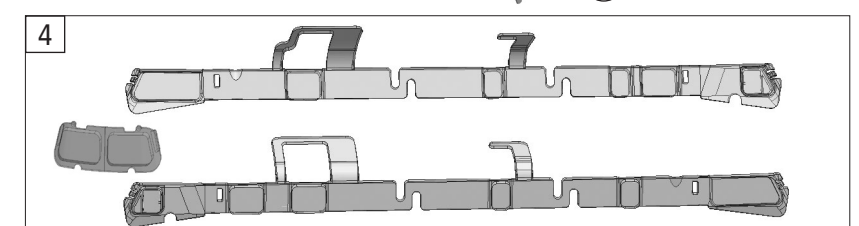
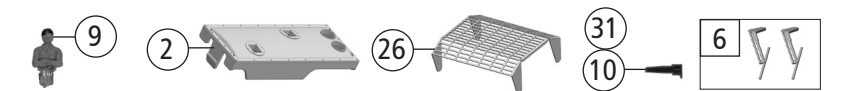
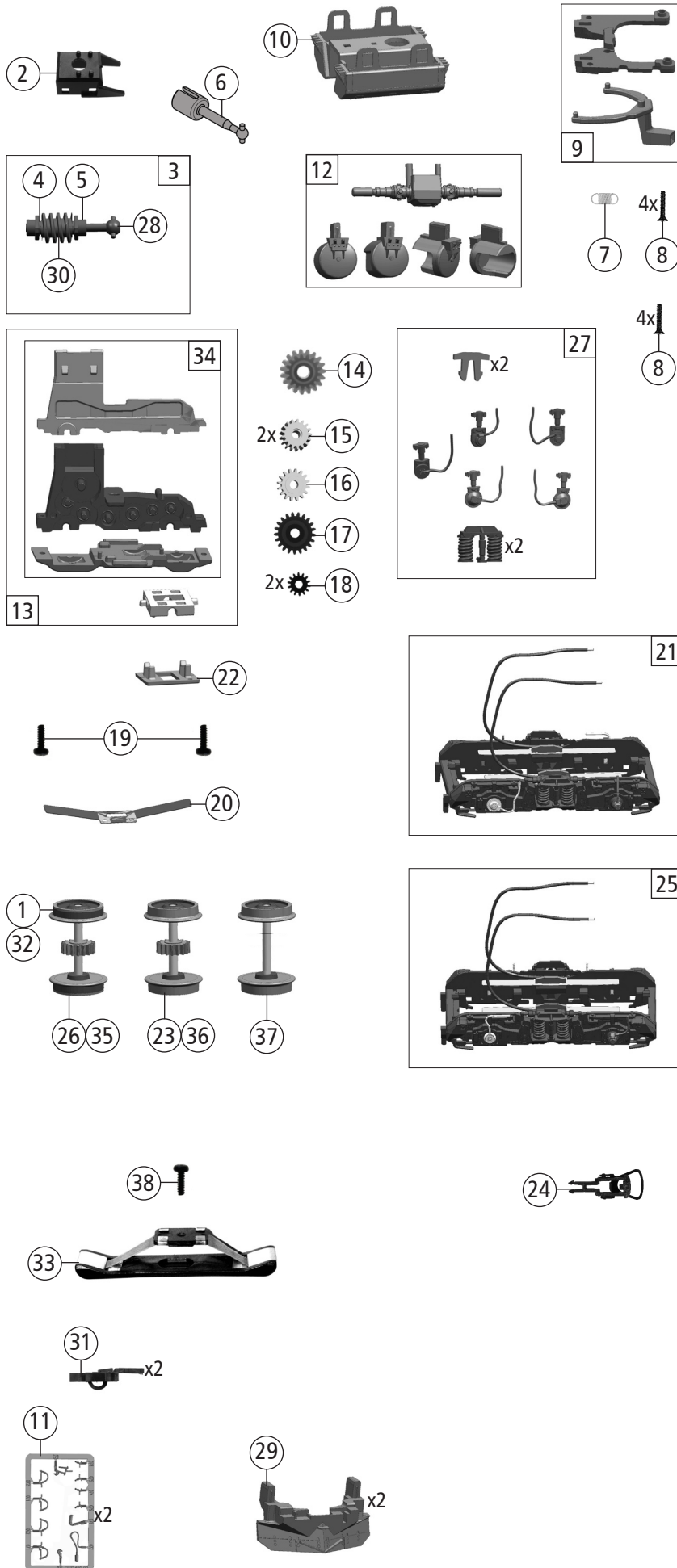


7300050	D-UEG	BR 218		
7310050				🔊
7320050			~	🔊

Pos. Nr. Pos.no.	Beschreibung Description	Art.-Nr. Art.no.	Preisgruppe Price bracket
1	Gehäuse kpl. Betr.nr. 218 333-3 Body ass. loco no. 218 333-3	150978	36
2	Dachaufsatz Roof part	136346	7
3	Auspuff Chimney	150979	5
4	TS-Fenster Part set window	141396	12
5	TS-Lichtleitern Part set-Light conductor	128441	8
6	Scheibenwischer Windscreen wiper	128443	7
7	Puffer Buffer	88503	5
8	Führerstand Drivers cab	150582	6
9	Lokführer Loco driver	110407	6
10	UIC-Dose UIC-Socket	150980	3
11	TS-Handgriffe Part set handrail	140186	12
12	Türgriffstange Doorhandrail	128446	6
13	Inneneinrichtung KM Interior	150576	5
14	Platine kpl. PLUX16 PCB	148445	20
15	Brückenstecker 16PLUX Connector 16 PLUX	133241	10
16	GF-Schraube M1,6x5 mm GF-Screw	115269	3
17	TS-Treppe,Kabel,Handrad Part set steps,cable,handwheel	128472	7
18	Zugheizkupplung+Zugheizdose Heat coupling+Heat socket	128473	5
19	Motor m.2Schwungmasse+Kardanschale KM Motor w. 2flywheels+Cardan reception	146020	25
20	M-Kontaktfeder lang Motor contact spring long	145560	4
21	M-Kontaktfeder kurz Motor contact spring short	145561	4
22	Grundrahmen Main frame	146493	17
23	TS-Lichtabdeckung Part set light cover	128425	5
24	Zugfunkantenne Radio antenna	150684	4
25	Kardanschale Cardan bearing	87129	4
26	Dachgitter Roof grid	136349	7
27	Motordistanzplatte Motor spacer plate	146459	7
28	Kühlergrill Cooler grill	146427	5
29	Umlauf und Puffertritt Running board and buffer treadle	140185	7
30	TS-Treppen Part set-Steps	150687	6
31	UIC-Dose UIC-Socket	130065	3
Sound			
32	Platine kpl. PLUX16 PCB	148456	20
33	Lautsprecher Loudspeaker	129524	13
34	Sounddecoder MS450 Plux-22 Sound-decoder	147377	39





Pos. Nr. Pos.no.	Beschreibung Description	Art.-Nr. Art.no.	Preisgruppe Price bracket
7300050	D-UEG BR 218	==	
7310050		==	🔊
7320050		~	🔊
1	Hafringsatz 10,3-12,8mm 10Stk. Set with traction ties 10pieces	40069	---
2	Schneckendeckel Worm cover	121285	4
3	Schneckensatz Worm set	148414	13
4	Beilagscheibe Washer	86108	3
5	Lager für Schneckenachse Bearing for worm axle	89749	6
6	Kardanwelle Cardan shaft	146458	5
7	Zugfeder Tension spring	86208	3
8	SK-Schraube M1,6x7 mm SK-Screw	116493	3
9	Deichsel und Kulisse Drawbar and backdrop	128458	7
10	Dieseltank Dieseltank	150974	6
11	TS - Bremsschläuche + Zughaken Part set of brake tubes & coupling hooks	139832	7
12	TS-Luftkesseln, Kardanwelle Part set air boiler, cardan shaft	128460	8
13	TS-Getriebe 4-tlg. Part set gear 4-parts	140183	15
14	Schneckenrad doppel Z=19/17 Double worm gear wheel Z=19/17	86413	6
15	Zahnrad Z=17 schwarz Gear Z=17	106722	4
16	Zahnrad Z=16 Gear Z=16	117617	3
17	Zahnrad Z=21 G/M=0,4 Gear Z=21 G/M=0,4	86414	3
18	Zahnrad Z=14 Gear Z=14	111115	3
19	GF-Schraube M1,6x5 mm GF-Screw	115269	3
20	Radkontakt Wheelcontact	128448	5
21	Blende 1 kpl. Bogie 1 ass.	150976	17
22	Achslagerdeckel Axle box cover	128465	5
23	Radsatz m. Zahnrad o. Hafring Wheelset w. gear without traction tyre	128466	11
24	Standardkupplung Standard coupling	89246	6
25	Blende 2 kpl. Bogie 2 ass.	150977	17
26	Radsatz m. Zahnrad m. Hafring Wheelset w. gear w. traction tyre	128468	12
27	TS-Blendensteckteile Part set-Bogie plug-in parts	128506	8
28	Kardankugel Cardan Ball	109614	4
29	Schneepflug offen und geschlossen Snow plow open and closed	150975	10
30	Schnecke Wormgear	86702	6
31	Kurzkupplung Short coupling	115550	6
AC - Wechselstrom			
32	Hafringsatz 10,3-12,4mm 10Stk. Set with traction ties 10pieces	40074	---
33	Schleifer 42mm Slider	86030	14
34	Getriebesatz 3tlg. Part set gear 3-parts	136179	13
35	Radsatz m. 2Hafringe m. Zahnrad AC Wheelset w. 2traction ties w. gear	128451	12
36	Radsatz o. Zahnrad o. Hafring Wheelset without gear without traction tyre	112685	10
37	Radsatz m. Zahnrad o. Hafring AC Wheelset w. gear without traction tyre	128452	11
38	SK-Schraube M1,6x5 mm SK-Screw	115269	3