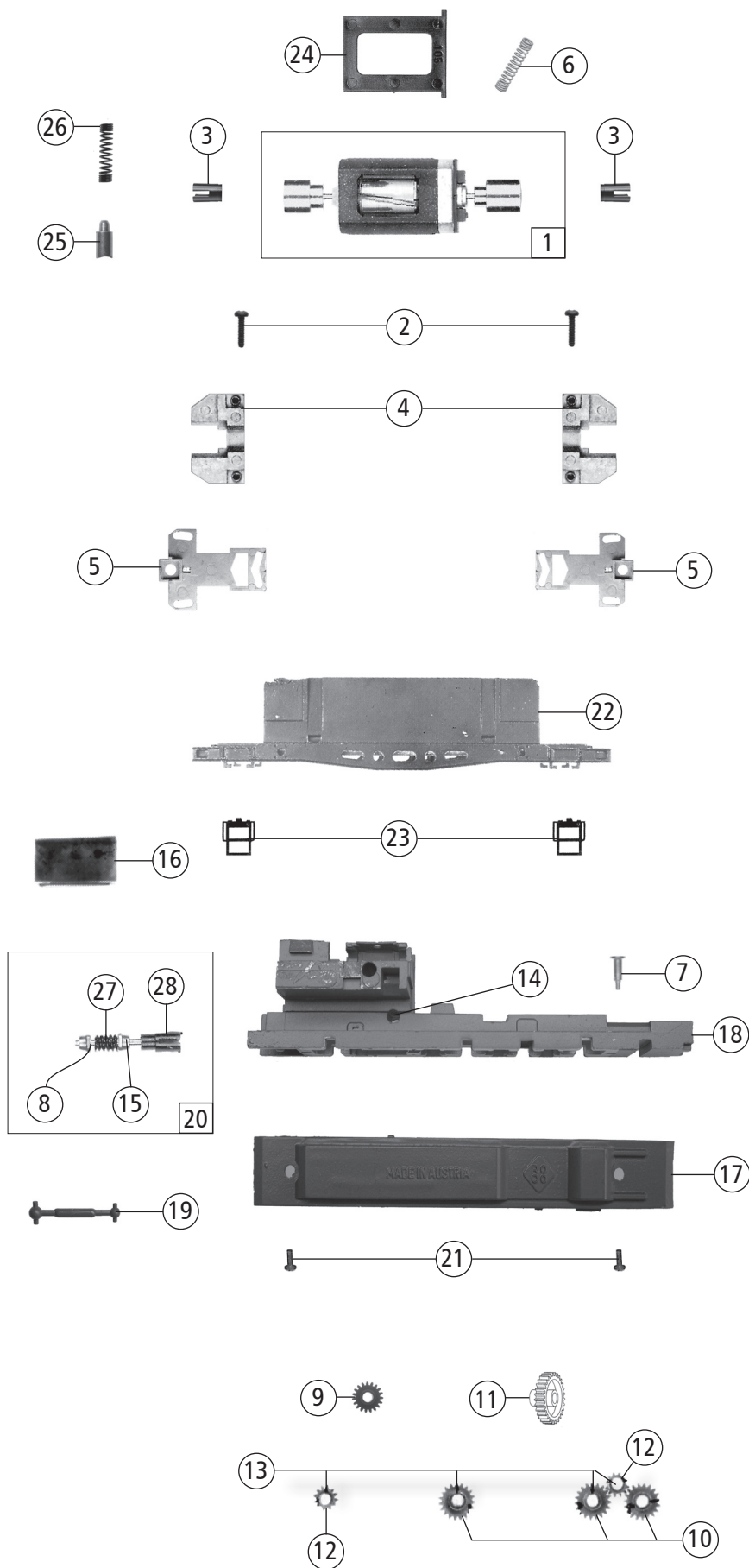
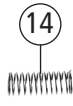
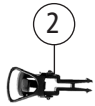
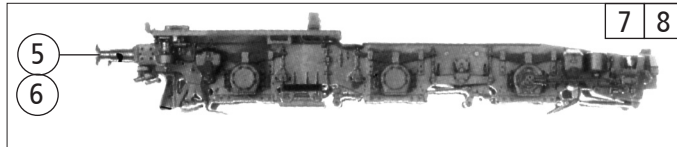
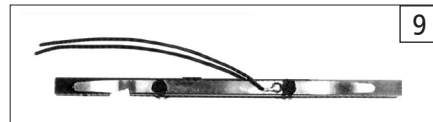


| Pos. Nr. Pos.no. | Beschreibung Description | Art.-Nr. Art.no. | Preisgruppe Price bracket |
|---------------------|---|---------------------|------------------------------|
| 71355 | DR BR 254 | = | |
| 71356 | | = | 🔊 |
| 1 | Gehäuse komplett Betr.Nr. 254 040-9 Body assembly Loco no. 254 040-9 | 149515 | 33 |
| 2 | SK-Halteschraube SK-holding screw | 136328 | 4 |
| 3 | Platine komplett Printed circuit assembly | 136546 | 28 |
| 4 | TS - Gehäuse lackiert Part set - body coated | 149516 | 8 |
| 5 | Lokpfeife Loco whistle | 88002 | 6 |
| 6 | Hauptschalter Main switch | 149517 | 3 |
| 7 | Isolator kurz 3 Insulator short | 108015 | 3 |
| 8 | Isolator 4 Insulator 4 | 88010 | 3 |
| 9 | Isolator 5 Insulator 5 | 88085 | 3 |
| 10 | TS - Isolatoren Part set - insulator | 131688 | 6 |
| 11 | Stromabnehmer isolator Pantograph insulator | 101114 | 4 |
| 12 | Türgriff kurz Hand rail short | 149514 | 5 |
| 13 | Lokführer Loco driver | 101208 | 6 |
| 14 | TS - Laufstege Part set - running boards | 131684 | 10 |
| 15 | Fenster Führerstand Window drivers cab | 131686 | 5 |
| 16 | Lichtabdeckung Light cover | 137383 | 4 |
| 17 | Seitenfenster Side windows | 93053 | 5 |
| 18 | Hauptleitung rot lackiert Main wire, red | 93057 | 6 |
| 19 | Trafoleitung, rot Transformer wire, red | 93058 | 6 |
| 20 | Stromabnehmerantrieb Pantograph drive | 101000 | 3 |
| 21 | Brückenstecker Bridge connector | 133241 | 10 |
| 22 | Führerstand Drivers cab | 135700 | 6 |
| 23 | Scheibenwischer Screen wiper | 136498 | 5 |
| 24 | Lichtabdeckung Light cover | 136535 | 4 |
| 25 | Linse oben Lens | 136534 | 3 |
| 26 | TS - Lampen und Lichtabdeckung Part set - lamps and light cover | 136539 | 10 |
| 27 | GF-Schraube M2x5 mm GF-Screw | 114966 | 3 |
| 28 | Stromabnehmer Pantograph | 85288 | 19 |
| 29 | Vorbaueinheit 1 komplett Extension body 1 assembly | 149518 | 18 |
| 30 | Vorbaueinheit 2 komplett Extension body 2 assembly | 149519 | 18 |
| 31 | LED-Platine kpl. LED board assembly | 136547 | 19 |
| 32 | Türgriff lackiert Door handle coated | 136536 | 6 |
| 33 | Lichtnagel lang Light nail long | 131685 | 4 |
| 34 | TS - Lichtnagel Part set - light nail | 136540 | 5 |
| 35 | Trennschalter Insulator | 88005 | 3 |
| Sound | | | |
| 36 | Sounddecoder Sound decoder | 147377 | 39 |
| 37 | Lautsprecher Loudspeaker | 129524 | 13 |
| 38 | Lautsprecherbox Loudspeaker box | 134067 | 5 |

Änderungen in Konstruktion und Ausführung vorbehalten
We reserve the right to change the construction and specification

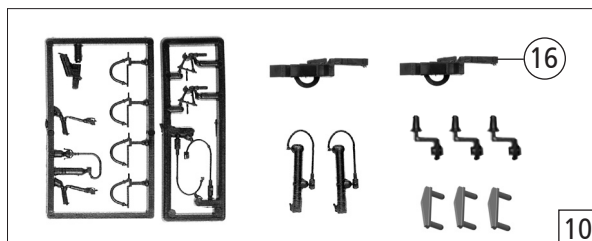
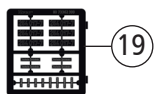
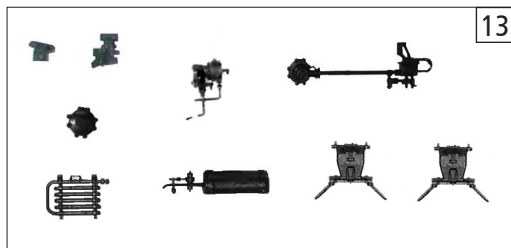


| Pos. Nr. Pos.no. | Beschreibung Description | Art.-Nr. Art.no. | Preisgruppe Price bracket |
|---------------------|--|---------------------|------------------------------|
| 1 | Motor Motor | 85102 | 28 |
| 2 | GF-Schraube M2x8 mm GF-Screw | 114923 | 3 |
| 3 | Kardanschale Cardan bearing | 87843 | 4 |
| 4 | Halteplatte Mouting plate | 135686 | 11 |
| 5 | Drehgestellhalter Holder for bogie | 93084 | 11 |
| 6 | Kontaktfeder Contact spring | 116876 | 3 |
| 7 | Drehgestellschraube Bogie screw | 85723 | 4 |
| 8 | Scheibe Washer | 86108 | 3 |
| 9 | Zahnrad Z=19/14M-0.4 Gear | 86416 | 4 |
| 10 | Zahnrad Z=19/M-0.4 Gear | 86417 | 3 |
| 11 | Zahnrad Z=29/M-0.4 Gear | 86467 | 3 |
| 12 | Zahnrad Z=12/M-0.4 Gear | 86470 | 3 |
| 13 | Achse 2,6 x 9,3 mm Axle | 89700 | 4 |
| 14 | Achse 2,6 x 11,5 mm Axle | 89701 | 3 |
| 15 | Lager für Schneckenachse Bearing for worm axle | 89749 | 6 |
| 16 | Schneckendeckel Worm cover | 93079 | 5 |
| 17 | Getriebeboden Gear bottom | 93085 | 11 |
| 18 | Getriebe Gear | 135695 | 11 |
| 19 | Kardanwelle Cardan shaft | 112920 | 3 |
| 20 | Schneckensatz Worm set | 112921 | 13 |
| 21 | GF-Schraube M2x4 mm GF-Screw | 114877 | 3 |
| 22 | Grundrahmen/Mittelteil Frame/Middle part | 149504 | 16 |
| 23 | Treppe -schwarz Step -black | 93080 | 4 |
| 24 | Motoraufflage Motor bearing | 105054 | 4 |
| 25 | Kohlebürste Carbon brush | 89743 | 6 |
| 26 | Bürstenfeder Carbon brush spring | 114197 | 3 |
| 27 | Schnecke Wormgear | 86703 | 5 |
| 28 | Kardanschale 8,0 mm - schwarz Cardan reception -black | 87152 | 3 |



11

12



| Pos. Nr. Pos.no. | Beschreibung Description | Art.-Nr. Art.no. | Preisgruppe Price bracket |
|---------------------|--|---------------------|------------------------------|
| 1 | Haftringsatz 10Stk. 12,9-14,6mm Set with traction tyre - 10 Pieces | 40070 | --- |
| 2 | Standardkupplung Standard coupling | 89246 | 6 |
| 3 | Steckdose Female | 149513 | 3 |
| 4 | Kupplungshalter Coupling holder | 149509 | 3 |
| 5 | Puffer gewölbt Buffer vaulted | 98859 | 5 |
| 6 | Puffer flach Buffer flat | 98860 | 5 |
| 7 | Blende 1 komplett Bogie 1 assembly | 149505 | 15 |
| 8 | Blende 2 komplett Bogie 2 assembly | 149506 | 15 |
| 9 | Radkontakthalter komplett Wheel contact holder assembly | 149508 | 9 |
| 10 | Zurüstbeutel Bag with accessories | 131693 | 11 |
| 11 | Radsatz ohne Haftring, mit Zahnrad Wheelset without traction tyre, with gear | 149511 | 11 |
| 12 | Radsatz mit 2 Haftringen, mit Zahnrad Wheelset with 2 traction tires, with gear | 149512 | 12 |
| 13 | Blendensteckteilesatz Push in parts for bogie | 149507 | 12 |
| 14 | Kupplungdruckfeder Spring for coupling | 86201 | 3 |
| 15 | Attrappenrahmen klein/schwarz Push in part set, small/black | 107808 | 4 |
| 16 | Kurzkupplung - Vorentkupplung Coupling short | 115550 | 6 |
| 17 | Rangiergriffstange Shunting handrail | 149520 | 3 |
| 18 | Schienenräumer Rail guard | 149510 | 5 |
| 19 | Tafelsatz Table set | 149521 | 12 |