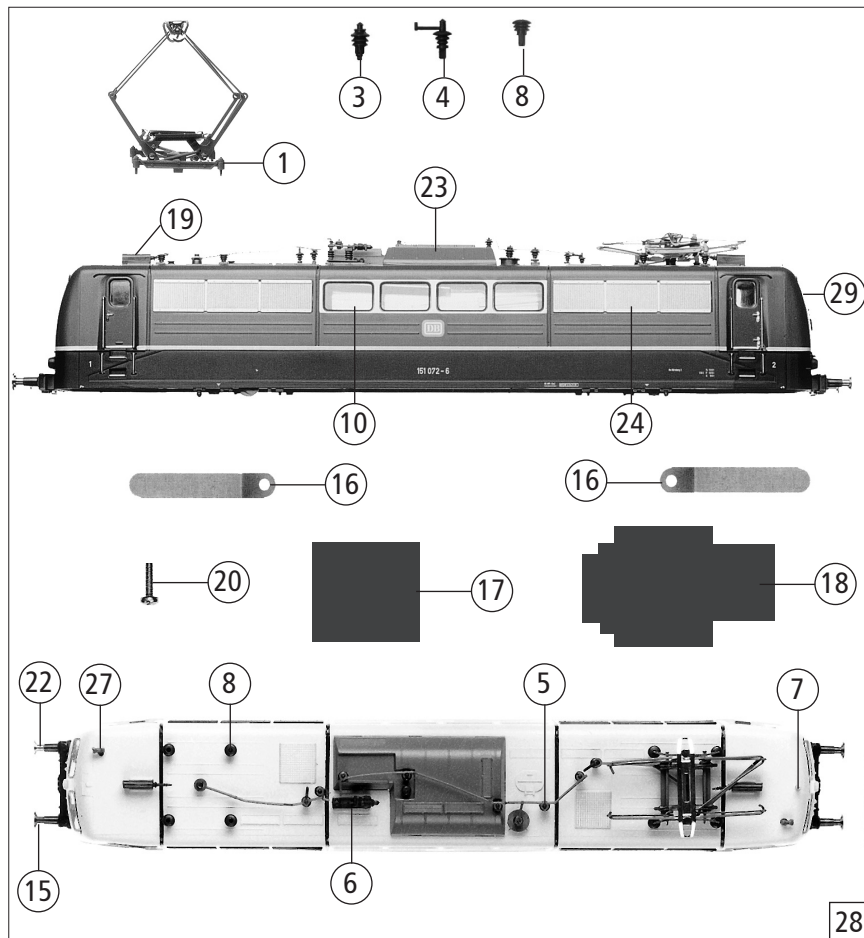


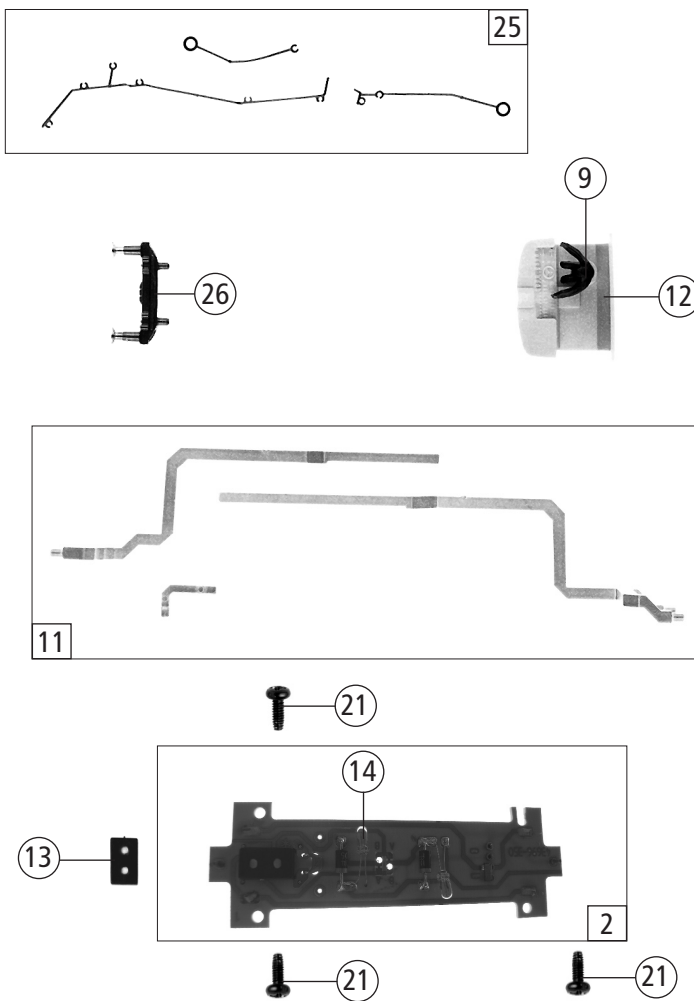
Symbolische Darstellung  
Symbolic Illustration

# Roco

Ersatzteilliste  
Replacement Parts



Pos. Nr. Pos.no.	Beschreibung Description	Art.-Nr. Art.no.	Preisgruppe Price bracket
62525		BR 151	
1	Stromabnehmer Pantograph	85429	39
2	Platine kpl. Printed circuit ass.	87863	51
3	Stützisolator Insulator	88001	2
4	Trennschalter Breaker	88005	2
5	Isolator Insulator	88009	2
6	Druckluftschalter grau-braun Pressure air switch grey-brown	88024	3
7	Antenne Antenna	88030	4
8	Isolator mit Loch Insulator with hole	88150	3
9	Lokführer blau Driver	89727	5
10	Seitenfenster Side window	92591	4
11	Leuchtstabsatz Light transmission bar set	92602	15
12	Führerstand Drivers cab	100456	6
13	Brückenstecker Connector	100644	7
14	Drahtlampe T1 16V/30mA Light bulb T1 16V/30mA	109321	10
15	Puffer flach Buffer flat	88502	4
16	Oberleitungskontakt Overhead supply connector	109811	3
17	Lampenabdeckung Light cover	109812	3
18	Führerstandsblende Drivers cab frame	109813	4
19	Senkantrieb Holst mechanism	125123	2
20	Schraube M 2x6 Screw M 2x6	85672	2
21	GF - Schraube M 2x5 GF - screw M 2x5	114966	2
22	Puffer gewölbt Buffer vaulted	88503	4
23	Dachaufsatz Roof top	125119	18
24	Lüfterblende Airing cover	101997	5
25	Dachleitungssatz Roof wire set	100457	12
26	Bohle rundes Loch ohne Puffer Deal with round hole without buffer	100587	4
27	Sirene Siren	109815	2
28	Gehäuse komplett Betr.nr.151 062-7 Body assembly loco no.151 062-7	125131	73
29	Stirnfenster Front window	101996	6



Änderungen in Konstruktion und Ausführung vorbehalten  
We reserve the right to change the construction and specification

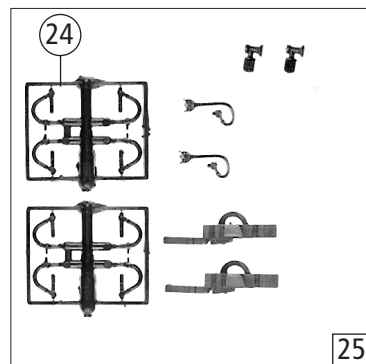
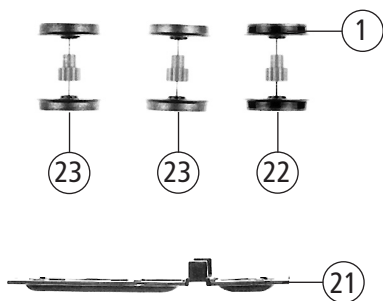
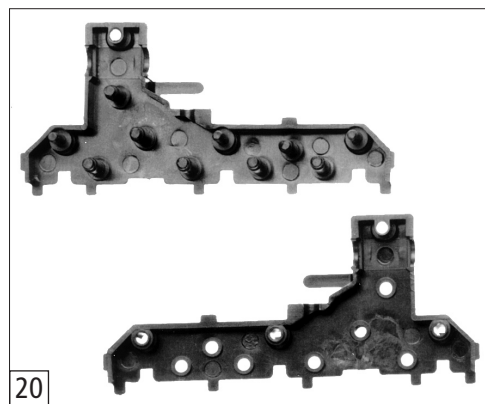
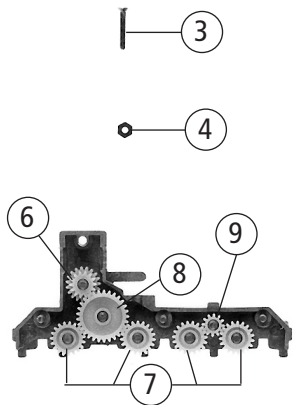
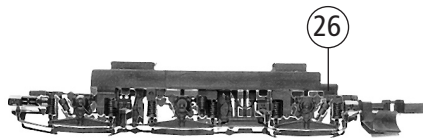
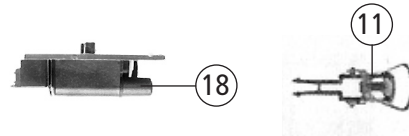
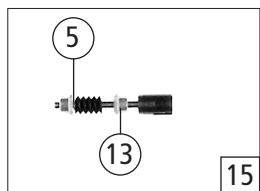
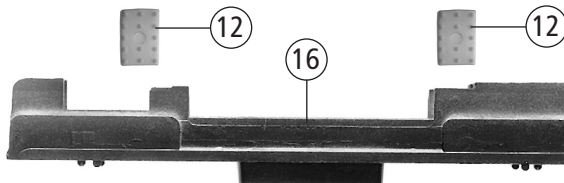
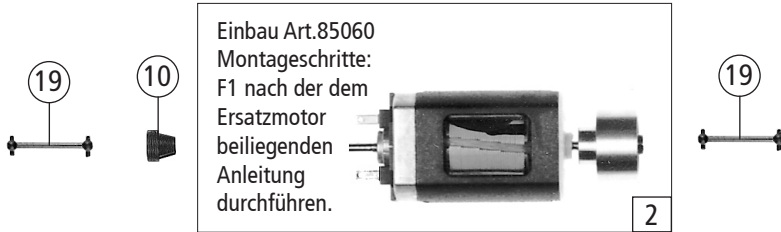
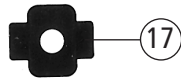
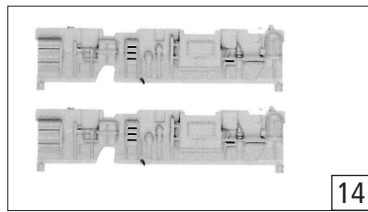
Auflage 11/2008  
Edition 11/2008

Blatt 1855  
Page 1855

Symbolische Darstellung  
Symbolic Illustration

# Roco

Ersatzteilliste  
Replacement Parts



Pos. Nr. Pos.no.	Beschreibung Description	Art.-Nr. Art.no.	Preisgruppe Price bracket
1	Hafrings.10Stk.12,9-14,6mm Set with traction tires 10 pieces	40070	---
2	Motor Motor	85060	57
3	Schraube M1,6x10 Screw M1,6x10	85746	2
4	Mutter M1,7 Nut M1,7	86000	2
5	Beilagscheibe Washer	86108	2
6	Zahnrad Z=19/14 M-0.4 Gear Z=19/14 M-0.4	86416	3
7	Zahnrad Z=19/M-0.4 Gear Z=19/M-0.4	86417	2
8	Zahnrad Z=29/M-0.4 Gear Z=29/M-0.4	86467	2
9	Zahnrad Z=12/M-0.4 Gear Z=12/M-0.4	86470	2
10	Kardanschale kurz 1,5mm Cardan bearing short 1,5mm	87129	3
11	Standardkupplung komplett Coupling standard assembly	89246	5
12	Gummibettung Rubber embedding	89728	3
13	Lager für Schnekenachse Bearing for worm axle	89749	6
14	Inneneinrichtungssatz Interior set	95164	5
15	Schneckensatz Worm set	100453	24
16	Grundrahmen Main frame	101995	30
17	Distanzplättchen Spacer	106116	2
18	Lok-Boden Loco bottom	109803	6
19	Kardanwelle Cardan Shaft	109804	2
20	Getriebebesatz Gear part set	109806	16
21	Getriebeboden Gear bottom	109807	18
22	Radsatz mit Hafringen Wheelset with traction tires	109809	20
23	Radsatz ohne Hafring Wheelset without traction tire	109810	18
24	Bremsschlauchsatz Air-brake hose	115698	2
25	Zurüstbeutel Bag with accessories	109814	26
26	Drehgestellblende Bogie frame	109808	25

Ersatzteile erhalten Sie bei Ihrem Fachhändler, oder Ihrer Landesvertretung:  
You can order your Replacement Parts at your local dealer, your country representative: