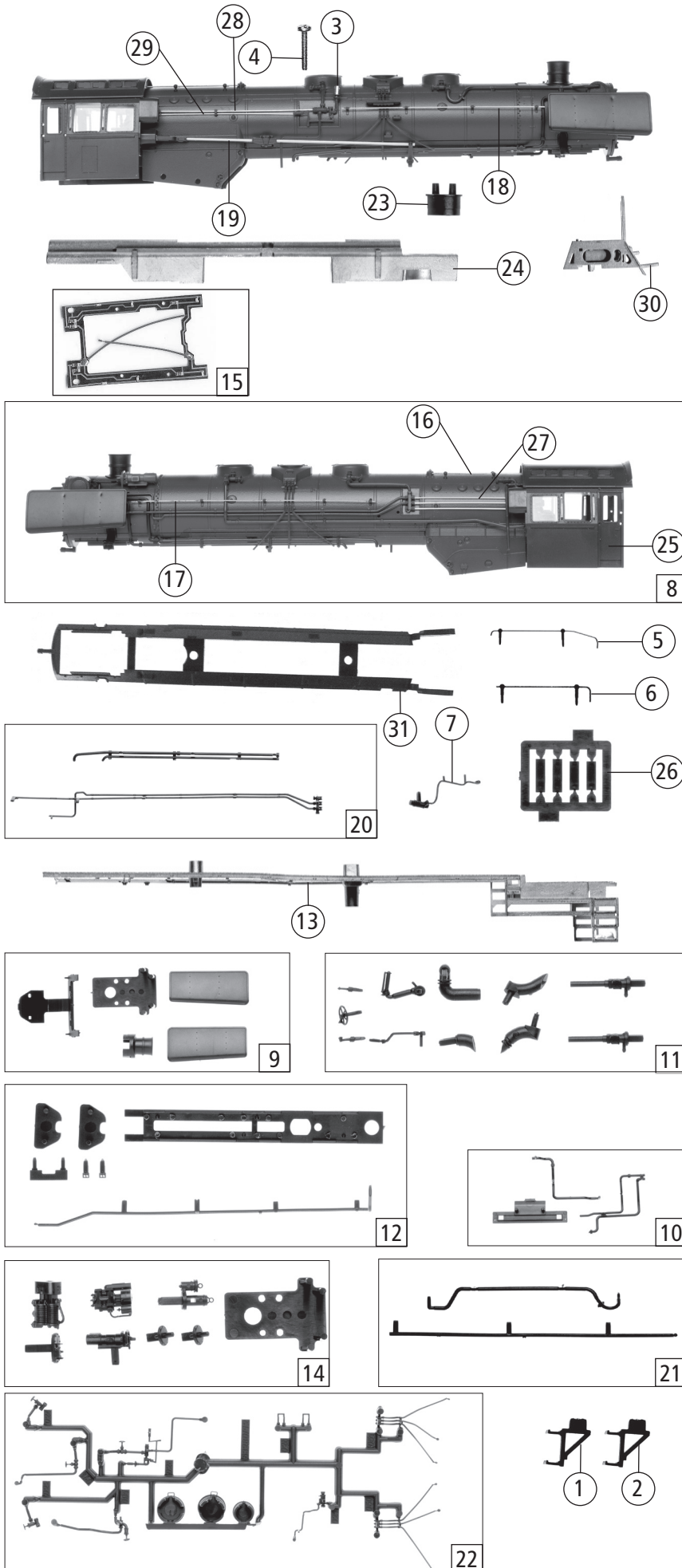


Symbolische Darstellung
Symbolic Illustration



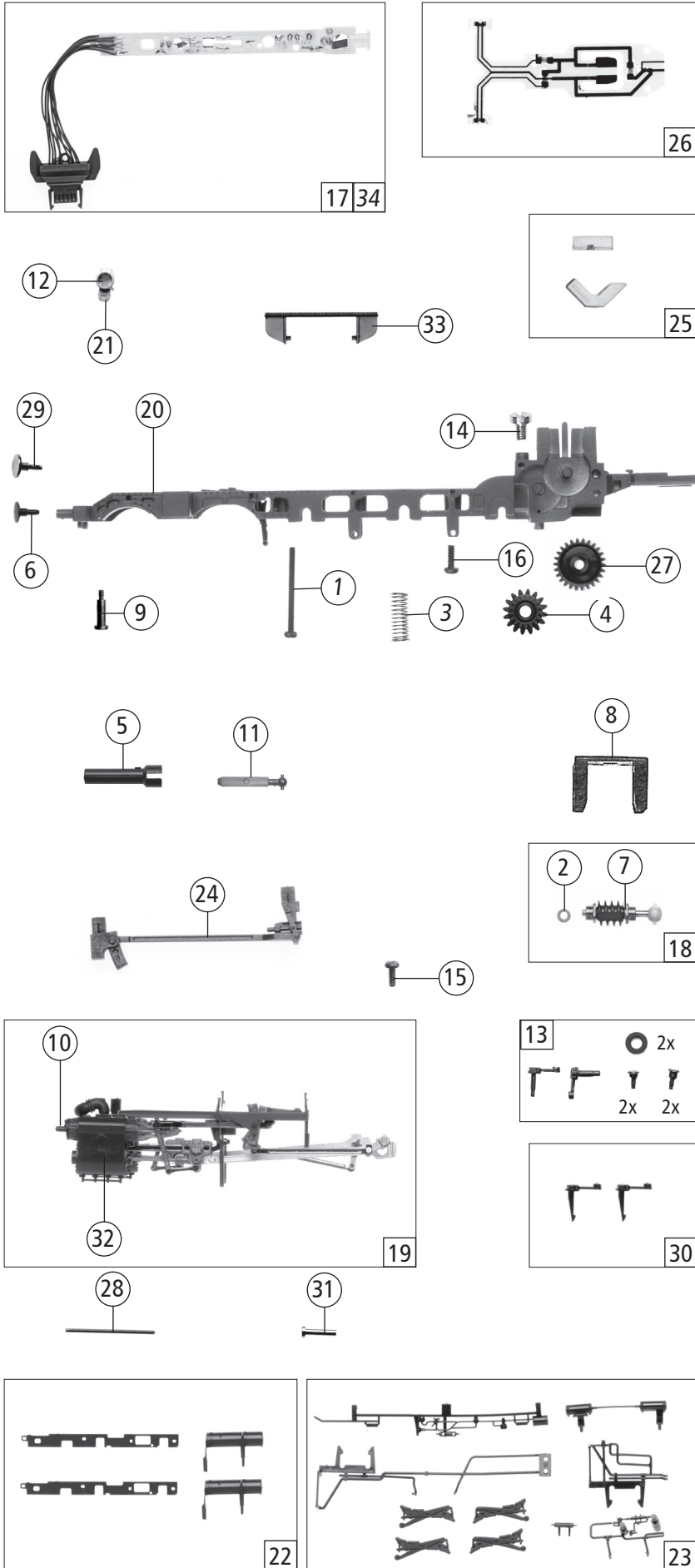
Pos. Nr. Pos. no.	Beschreibung Description	Art.-Nr. Art. no.	Preisgruppe Price bracket
63280	03 ¹⁰		
63281	03 ¹⁰		
69281			
1	Treppe links Step left	105940	3
2	Treppe rechts Step right	105941	3
3	Lokpfeife Signal-horn	108274	6
4	GF-Schraube M2X6 GF-Screw M2x6	114828	2
5	Griffstange lang Handle bar long	117409	2
6	Griffstange kurz Handle bar short	117410	2
7	Pumpenstange Pump rod	117411	4
8	Kessel komplett Boiler assembly	117412	85
9	Teilesatz Parts set	117422	7
10	Pufferlaufblech+Vorwärmersatz Buffer run sheet and pre heater set	117427	5
11	Teilesatz Parts set	117428	10
12	Teilesatz Parts set	117437	7
13	Umlaufblech Gangway	117442	40
14	Teilesatz Parts set	117443	7
15	Umlaufblechbeleuchtung Gangway lighting	117444	2
16	Kesselventilstange Boiler valve rod	117449	7
17	Griffstange links Handle bar left	117450	9
18	Griffstange rechts Handle bar right	117451	9
19	Steuergestänge Control rod	117452	19
20	Schalstangenven.+Kesselbodenleitung Connect rod valve and Boiler bottom circuit	117453	12
21	Vorwärmleitung+Kesselbodenleitung Pre-heater wire and Boiler bottom circuit	117454	4
22	Teilesatz Parts set	117455	10
23	Seuthehalter Seuthe holder	117456	3
24	Lokgewicht Loco weight	117457	17
25	Führerhaus komplett Driver's cab	117458	35
26	Nummertafeln komplett Number board assembly	117459	6
27	Drahtstange lackiert Wire rod coated	117460	3
28	Drahtstange lackiert Wire rod coated	117461	22
29	Drahtstange lackiert Wire rod coated	117462	3
30	Kesselauflage Boiler support	117485	6
31	Kesselboden Boiler bottom	117601	35

Änderungen in Konstruktion und Ausführung vorbehalten
We reserve the right to change the construction and specification

Symbolische Darstellung
Symbolic Illustration

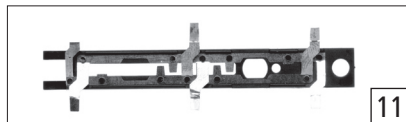
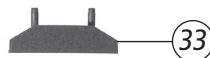
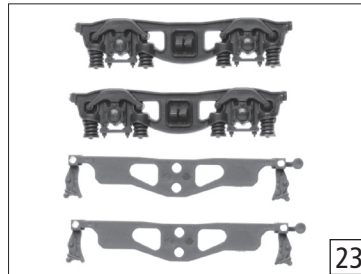
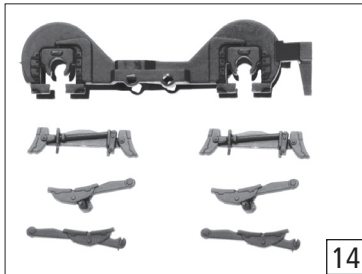
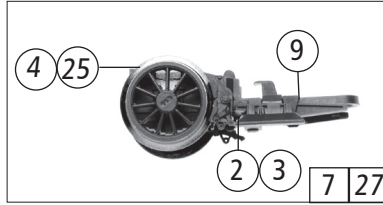
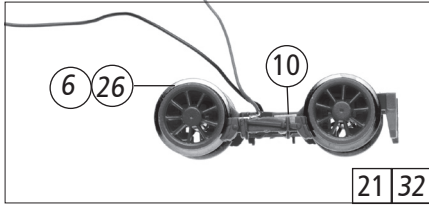
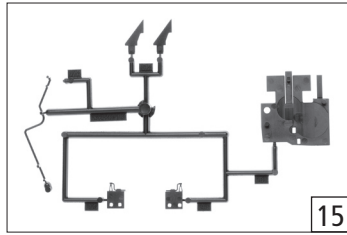
Roco

Ersatzteilliste
Replacement Parts



Pos. Nr. Pos.no.	Beschreibung Description	Art.-Nr. Art.no.	Preisgruppe Price bracket
63280	03 ¹⁰ =		
63281	03 ¹⁰ =		
69281			
1	Schraube M2X25 Screw M2X25	85759	3
2	Beilagscheibe Washer	86108	2
3	Druckfeder Pressure spring	120382	3
4	Schneckenzahnrad doppelt Worm gear double	86419	4
5	Kardanhülse 24 mm Carden bearing 24mm	87074	4
6	Puffer gewölbt Buffer vaulted	88503	4
7	Lager für Schneckenachse Bearing for worm axle	89749	6
8	Schneckendeckel Worm cover	94707	3
9	Ansatzschraube M2X8 Attempt screw M2x8	100101	3
10	Schiebersatz Gate set	105968	9
11	Kardanwelle Cardan shaft	106216	4
12	Linse groß Lens big	110738	2
13	Ts.- Steuerung Part set steering	114180	10
14	GF-Schraube M1,6X4 GF- screw M1,6x4	114850	2
15	GF-Schraube M2x5 GF-Screw M2x5	114966	2
16	GF-Schraube M1,6x5 GF-screw M1,6x5	115269	2
17	DC-Lokplatine komplett DC- boiler printed circuit assembly	117405	52
18	Schneckensatz Worm set	117407	24
19	Steuerung komplett Steering assembly	117408	60
20	Lokgrundrahmen Frame	117416	30
21	Loklampe gross Loco lamp big	117417	3
22	Teilesatz Parts set	117421	5
23	Teilesatz Parts set	117424	10
24	Innensteuerung Indoor control	117429	2
25	Tenderlichtnagel+Lichtleiter unten Tender light transmission set under	117430	4
26	Lokflex komplett Locomotive flex assembly	117434	35
27	Zahnrad Z=26 POM rot Gear Z=26 POM red	117438	2
28	Drahtstange 0.4 Wire rod 0.4	117439	3
29	Puffer Buffer	117440	4
30	Gegenkurbelsatz Contra crank set	117445	4
31	Niet langer Ansatz Riveted bolt long attempt	117446	2
32	Zylinderblock Cylinder block	117447	29
33	Laufblech Gangway	117486	3
AC-Wechselstrom 69281			
34	DC-Lokplatine komplett DC-circuit board assembly	117477	52

Symbolische Darstellung
Symbolic Illustration



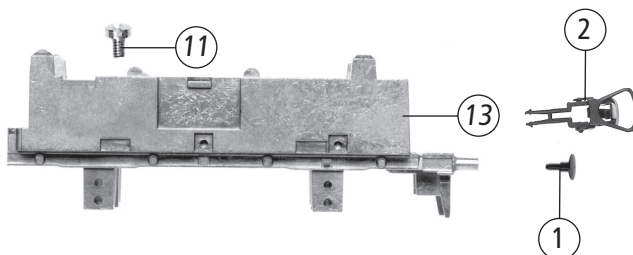
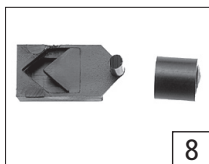
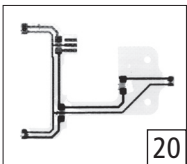
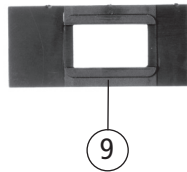
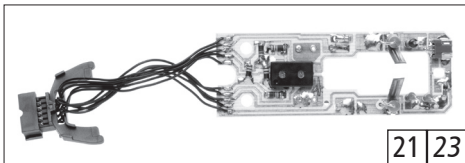
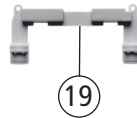
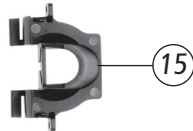
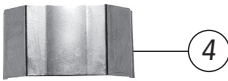
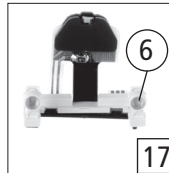
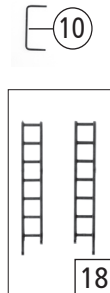
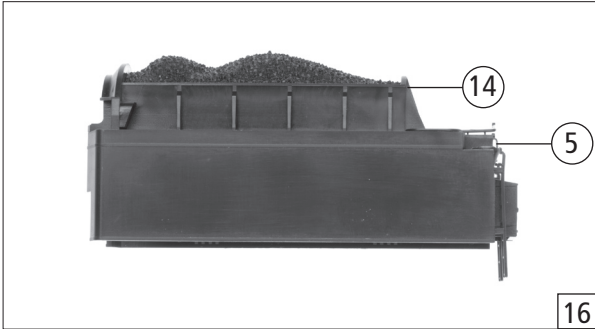
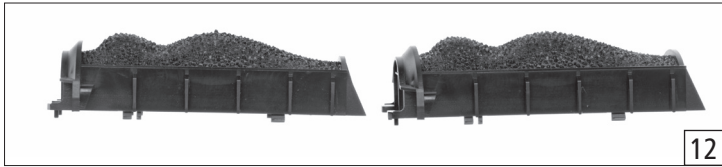
Roco

Ersatzteilliste
Replacement Parts

63280		03 ¹⁰	=	
63281		03 ¹⁰	=	
69281		?		

Pos. Nr. Pos.no.	Beschreibung Description	Art.-Nr. Art.no.	Preisgruppe Price bracket
1	Kupplungsdruckfeder RD2,3x6x0,15 Coupling pressure spring RD2,3x6x0,15	86201	2
2	Bremsbacke links Brake shoe left	106037	3
3	Bremsbacke rechts Brake shoe right	106038	3
4	Nachlaufradsatz Tail wheelset	108282	14
5	Indusi Einrichtung Indusi equipment	110726	3
6	Vorlaufradsatz Pilot wheelset	112017	14
7	Nachlaufgestell komplett Tail truck assembly	114190	28
8	GF-Schraube M2x8 GF-screw M2x8	114923	2
9	Nachlaufgestell Tail truck	115552	2
10	Vorlaufradkontakt Pilot wheel contact	116851	2
11	Radkontakt Baugruppe Wheel contact assembly	117406	9
12	Kuppelstange rechts Connecting rod right	117418	20
13	Kuppelstange links Connecting rod left	117419	20
14	Teilesatz Parts set	117420	8
15	Teilesatz Parts set	117423	7
16	Lokboden Loco bottom	117425	10
17	Bremsgestänge Brake leverage	117426	5
18	Kuppelradsatz lackiert Coupling wheelset coated	117431	21
19	Treibradsatz lackiert Driving wheelset coated	117432	22
20	Kuppelradsatz mit Zahnrad lackiert Coupling wheelset with gear coated	117433	22
21	Vorlaufgestell komplett Pilot frame assembly	117435	35
22	Nachlaufgestellfeder Tail truck spring	117441	2
23	Blenden+Bremsbackensatz Bezel and set of brake shoes	117467	4
AC-Wechselstrom 69281			
24	AC-Schleifer 56 mm AC-wiper 56 mm	86033	---
25	Nachlaufradsatz Tail wheelset	108313	14
26	Vorlaufradsatz Pilot wheelset	112108	14
27	Nachlaufgestell kpl. Tail truck assembly	114222	28
28	GF-Schraube M1,6x10 GF-screw M1,6x10	114881	2
29	Radsatz 1 lackiert Wheelset 1 coated	117478	21
30	Kuppelradsatz lackiert Coupling wheelset coated	117479	22
31	Kuppelradatz mit Zahnrad lackiert Coupling wheelset with gear coated	117480	22
32	Vorlaufgestell komplett Pilot frame assembly	117481	34
33	Schleiferauflage Polisher support	117482	2
34	Schleiferkontakt Polisher contact	117483	3

Symbolische Darstellung
Symbolic Illustration

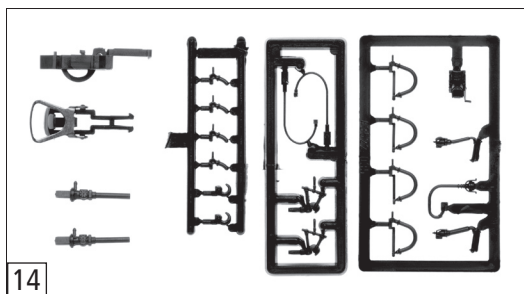
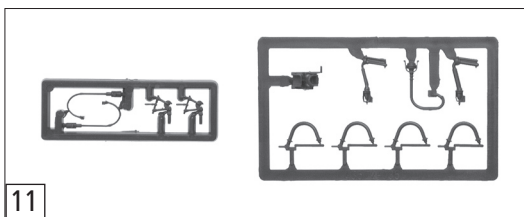
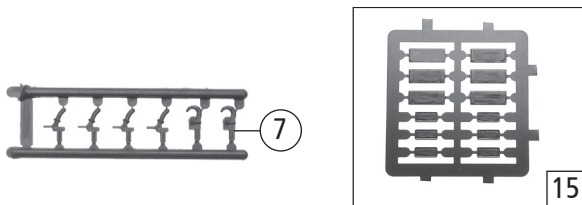
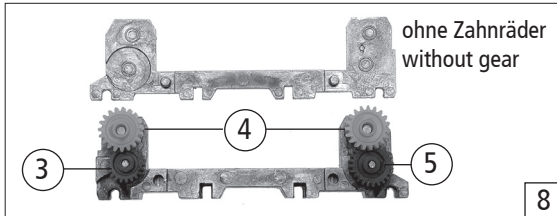
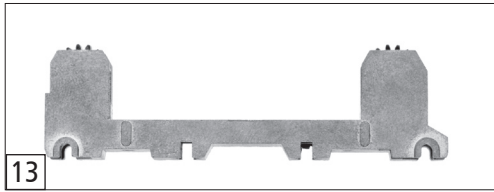


Roco

Ersatzteilliste
Replacement Parts

Pos. Nr. Pos.no.	Beschreibung Description	Art.-Nr. Art.no.	Preisgruppe Price bracket
63280	03 ¹⁰ =		
63281	03 ¹⁰ =		
69281			
1	Puffer gewölbt Buffer vaulted	88503	4
2	Standardkupplung komplett Coupling standard	89246	5
3	Tenderleitung Tender pipe	94535	4
4	Motorspange Clip for the motor	108264	2
5	Tendergriffstange Handle bar tender	108591	3
6	Linse gross lens big	110738	2
7	Motorbaugruppe Motor assembly	111787	57
8	Teilesatz Parts set	111829	6
9	Modulhalter Modul holder	111877	2
10	Griffstange kurz Handle bar short	114210	3
11	GF-Schraube M1,6x4 GF- screw M1,6x4	114850	2
12	Kohlenkastenaufsatz bekohlt Tender simulated coal	117415	33
13	Tendergrundrahmen Tender base frame	117464	20
14	Kohlekasten Coal box	117465	23
15	Schwungrad Abdeckung Flywheel cover	117466	4
16	Tendergehäuse komplett Tender casing assembly	117468	44
17	Tenderlicht unten komplett Tender light under assembly	117469	39
18	Heckleitersatz Ladderset, rear	117472	6
19	Tenderlampe Tender lamp	117473	11
20	Tenderflex komplett Tender flex assembly	117474	34
21	Tenderplatine komplett Printed circuit assembly for tender	117475	56
22	Wasserklappensatz Water hatches set	117476	4
AC-Wechselstrom 69281			
23	AC-Tenderplatine AC-printed circuit tender	117484	56

Symbolische Darstellung
Symbolic Illustration



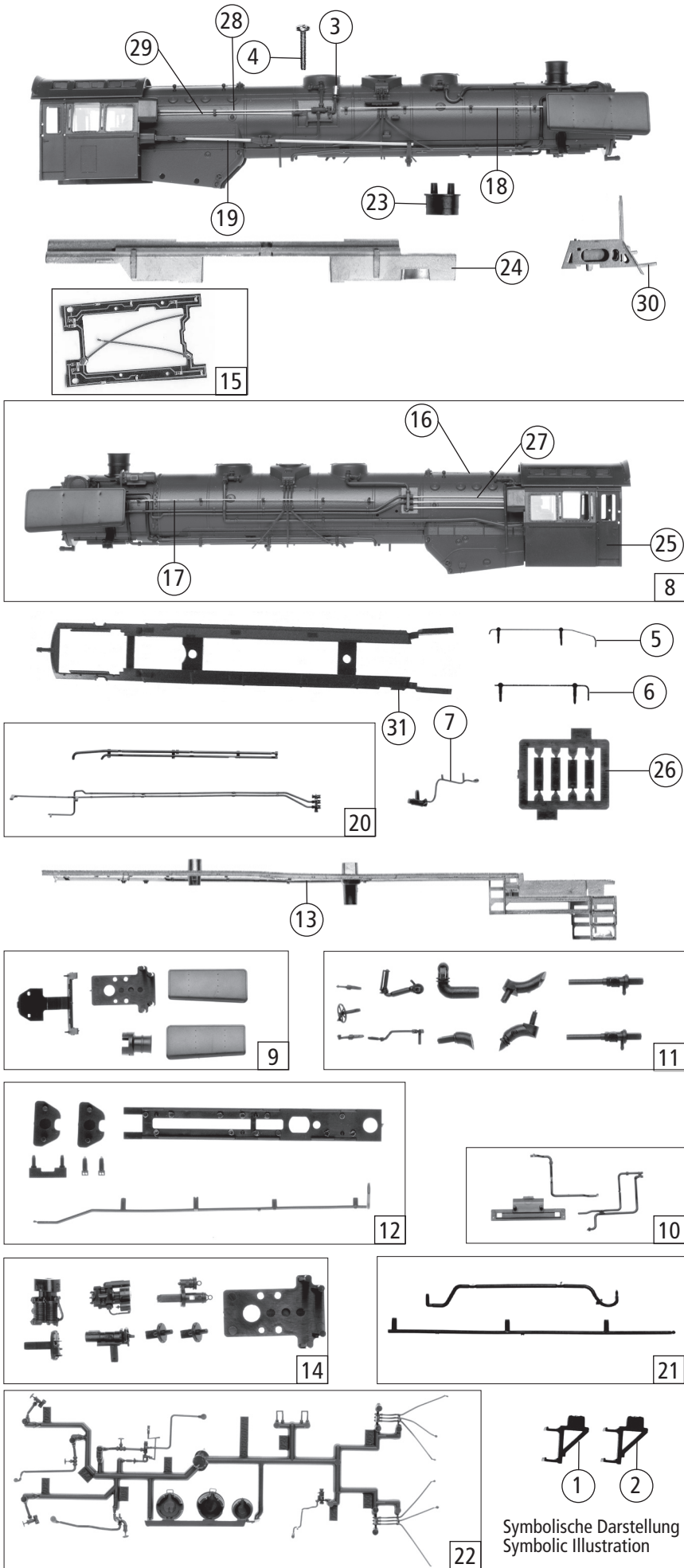
Roco

Ersatzteilliste
Replacement Parts

Pos. Nr. Pos. no.	Beschreibung Description	Art.-Nr. Art. no.	Preisgruppe Price bracket
63280	03 ¹⁰ =		
63281	03 ¹⁰ =		
69281	~		
1	Hafrings.10Stk.10,3-12,8mm Set with traction tires 10 pieces	40069	---
2	Kegeldruckfeder Pin pressure spring	86234	2
3	Zahnrad Z=21 G/M=0.4 Gear Z=21 G/M=0.4	86414	2
4	Schneckenzahnrad doppelt Worm gear double	86419	4
5	Zahnrad Z=24 rot M=0.4 20 Grad Gear Z=24 red M=0.4 20 degree	86516	2
6	Radsatz ohne Zahnrad Wheelset without gear	90454	16
7	Attrappenrahmen klein Push in part set,smal	107808	3
8	Getriebebesatz ohne Zahnäder Gear set without gear	108262	18
9	Getriebeboden Gear bottom	108263	14
10	Radsatz mit Haftreifen und Zahnrad Wheelset with traction tyre with gear	108265	20
11	Zubehörrahmensatz Accessories set	108322	8
12	GF-Schraube M2x10 GF- screw M2x10	114845	2
13	Tendergetriebe komplett Tender gear assembly	115542	25
14	Zurüstbeutel Bag with accessories	117413	24
15	Tafelsatz lackiert Set with number bords	117414	24
AC-Wechselstrom 69281			
16	Hafrings.10Stk. 10,3-12,4mm Set with traction tires 10 pieces	40074	---
17	Tenderradsatz Tender wheelset	108304	18
18	Radsatz mit Hafringen Wheelset with trction tyres	108305	20

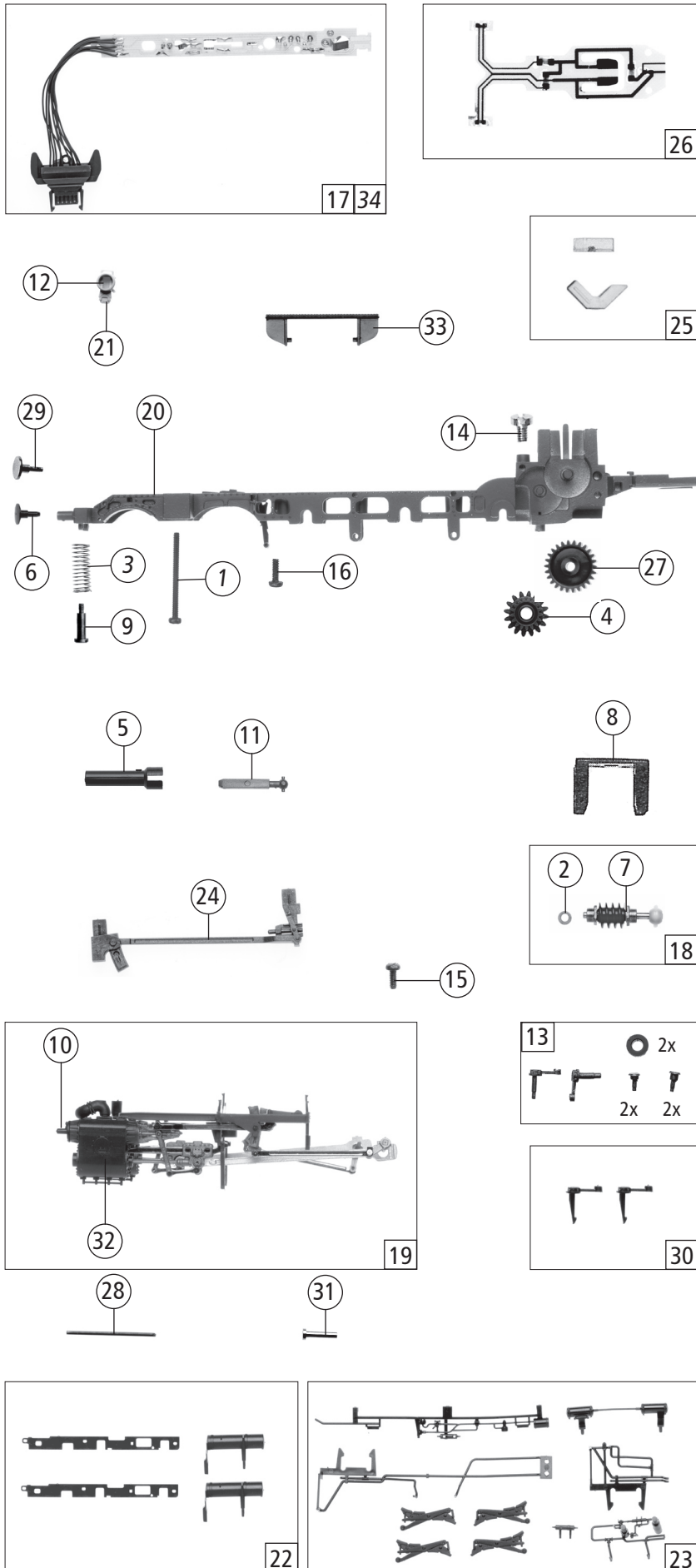
Ersatzteile erhalten Sie bei Ihrem Fachhändler,
oder Ihrer Landesvertretung.

You can order your Replacement Parts at your
local dealer, your country representative.



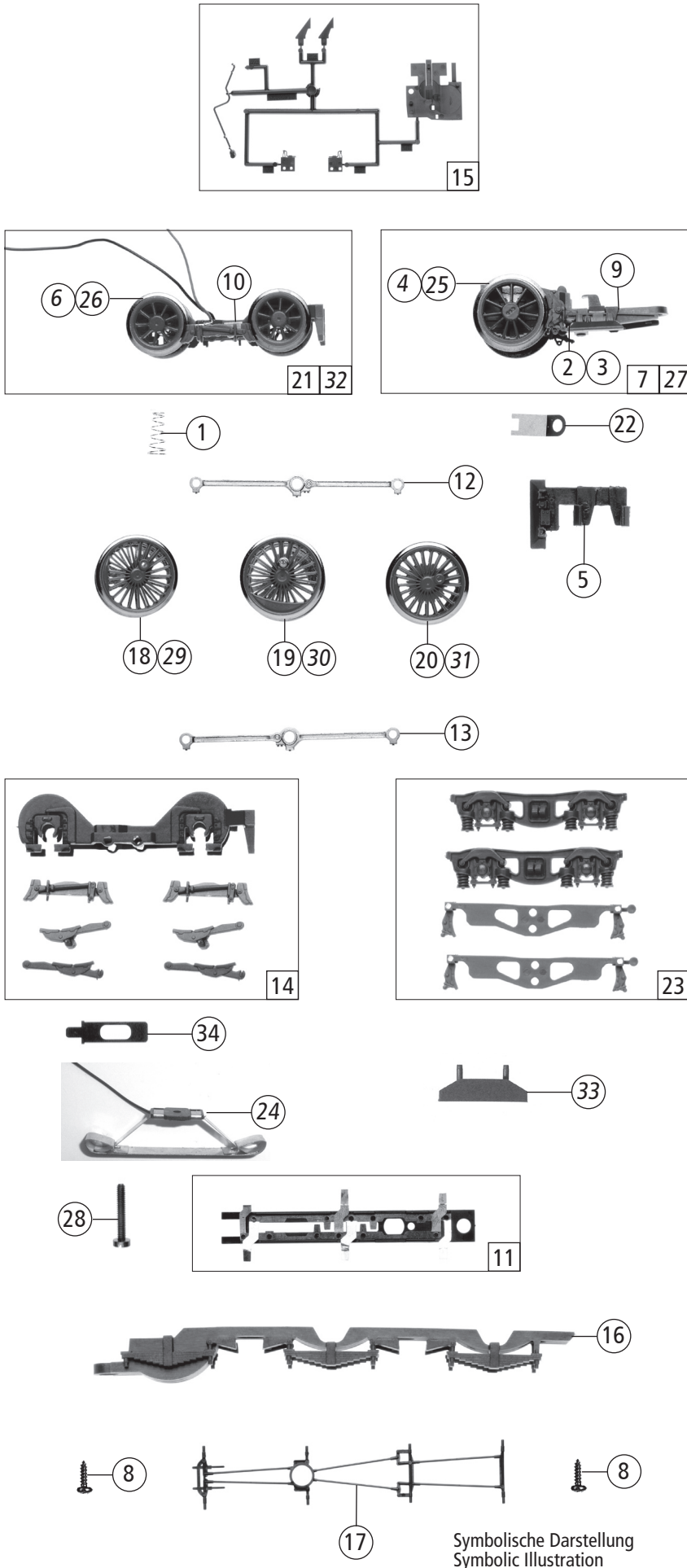
Pos. Nr. Pos. no.	Beschreibung Description	Art.-Nr. Art. no.	Preisgruppe Price bracket
63280	03 ¹⁰		
63281	03 ¹⁰		
69281			
1	Treppe links Step left	105940	3
2	Treppe rechts Step right	105941	3
3	Lokpfeife Signal-horn	108274	6
4	GF-Schraube M2X6 GF-Screw M2x6	114828	2
5	Griffstange lang Handle bar long	117409	2
6	Griffstange kurz Handle bar short	117410	2
7	Pumpenstange Pump rod	117411	4
8	Kessel komplett Boiler assembly	117412	85
9	Teilesatz Parts set	117422	7
10	Pufferlaufblech+Vorwärmersatz Buffer run sheet and pre heater set	117427	5
11	Teilesatz Parts set	117428	10
12	Teilesatz Parts set	117437	7
13	Umlaufblech Gangway	117442	40
14	Teilesatz Parts set	117443	7
15	Umlaufblechbeleuchtung Gangway lighting	117444	2
16	Kesselventilstange Boiler valve rod	117449	7
17	Griffstange links Handle bar left	117450	9
18	Griffstange rechts Handle bar right	117451	9
19	Steuergestänge Control rod	117452	19
20	Schalstangenven.+Kesselbodenleitung Connect rod valve and Boiler bottom circuit	117453	12
21	Vorwärmleitung+Kesselbodenleitung Pre-heater wire and Boiler bottom circuit	117454	4
22	Teilesatz Parts set	117455	10
23	Seuthehalter Seuthe holder	117456	3
24	Lokgewicht Loco weight	117457	17
25	Führerhaus komplett Driver's cab	117458	35
26	Nummertafeln komplett Number board assembly	117459	6
27	Drahtstange lackiert Wire rod coated	117460	3
28	Drahtstange lackiert Wire rod coated	117461	22
29	Drahtstange lackiert Wire rod coated	117462	3
30	Kesselauflage Boiler support	117485	6
31	Kesselboden Boiler bottom	117601	35

Änderungen in Konstruktion und Ausführung vorbehalten
We reserve the right to change the construction and specification



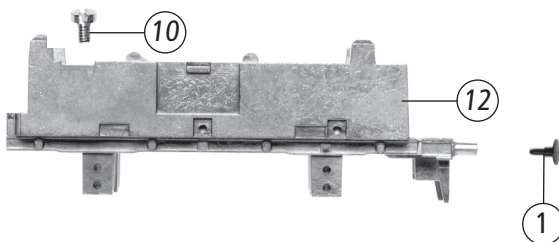
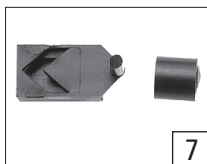
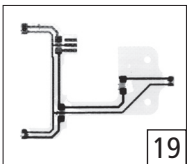
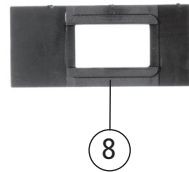
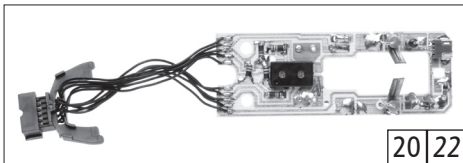
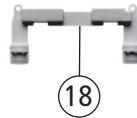
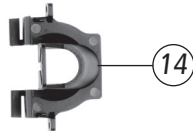
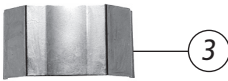
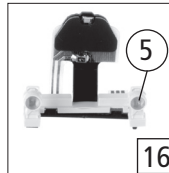
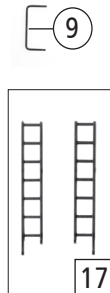
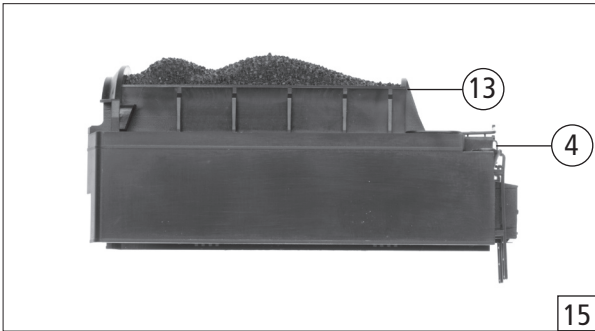
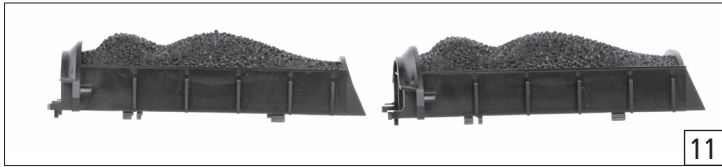
Symbolische Darstellung
Symbolic illustration

Pos. Nr. Pos.no.	Beschreibung Description	Art.-Nr. Art.no.	Preisgruppe Price bracket
63280	03 ¹⁰ =		
63281	03 ¹⁰ =		
69281			
1	Schraube M2X25 Screw M2X25	85759	3
2	Beilagscheibe Washer	86108	2
3	Druckfeder Pressure spring	86271	3
4	Schneckenzahnrad doppelt Worm gear double	86419	4
5	Kardanhülse 24 mm Carden bearing 24mm	87074	4
6	Puffer gewölbt Buffer vaulted	88503	4
7	Lager für Schneckenachse Bearing for worm axle	89749	6
8	Schneckendeckel Worm cover	94707	3
9	Ansatzschraube M2X8 Attempt screw M2x8	100101	3
10	Schiebersatz Gate set	105968	9
11	Kardanwelle Cardan shaft	106216	4
12	Linse groß Lens big	110738	2
13	Ts.- Steuerung Part set steering	114180	10
14	GF-Schraube M1,6X4 GF- screw M1,6x4	114850	2
15	GF-Schraube M2x5 GF-Screw M2x5	114966	2
16	GF-Schraube M1,6x5 GF-screw M1,6x5	115269	2
17	DC-Lokplatine komplett DC- boiler printed circuit assembly	117405	52
18	Schneckensatz Worm set	117407	24
19	Steuerung komplett Steering assembly	117408	60
20	Lokgrundrahmen Frame	117416	30
21	Loklampe gross Loco lamp big	117417	3
22	Teilesatz Parts set	117421	5
23	Teilesatz Parts set	117424	10
24	Innensteuerung Indoor control	117429	2
25	Tenderlichtnagel+Lichtleiter unten Tender light transmission set under	117430	4
26	Lokflex komplett Locomotive flex assembly	117434	35
27	Zahnrad Z=26 POM rot Gear Z=26 POM red	117438	2
28	Drahtstange 0.4 Wire rod 0.4	117439	3
29	Puffer Buffer	117440	4
30	Gegenkurbelsatz Contra crank set	117445	4
31	Niet langer Ansatz Riveted bolt long attempt	117446	2
32	Zylinderblock Cylinder block	117447	29
33	Laufblech Gangway	117486	3
AC-Wechselstrom 69281			
34	DC-Lokplatine komplett DC-circuit board assembly	117477	52



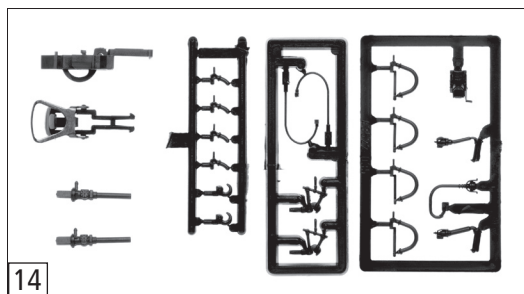
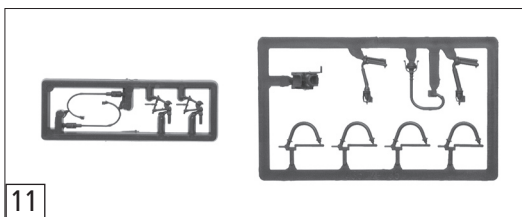
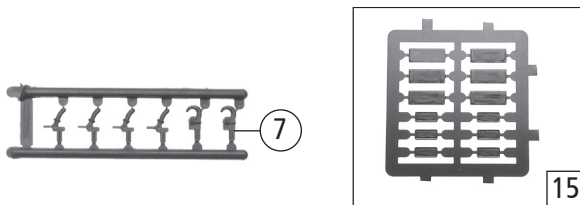
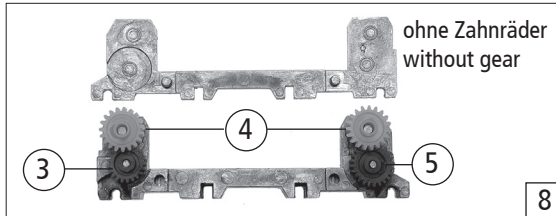
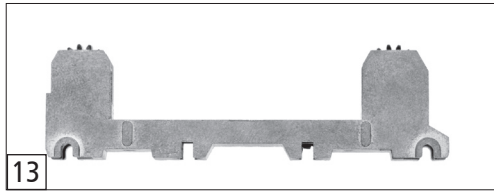
Symbolische Darstellung
Symbolic Illustration

Pos. Nr. Pos.no.	Beschreibung Description	Art.-Nr. Art.no.	Preisgruppe Price bracket
63280	03 ¹⁰ =		
63281	03 ¹⁰ =		
69281			
1	Kupplungsdruckfeder RD2,3x6x0,15 Coupling pressure spring RD2,3x6x0,15	86201	2
2	Bremsbacke links Brake shoe left	106037	3
3	Bremsbacke rechts Brake shoe right	106038	3
4	Nachlaufradsatz Tail wheelset	108282	14
5	Indusi Einrichtung Indusi equipment	110726	3
6	Vorlaufradsatz Pilot wheelset	112017	14
7	Nachlaufgestell komplett Tail truck assembly	114190	28
8	GF-Schraube M2x8 GF-screw M2x8	114923	2
9	Nachlaufgestell Tail truck	115552	2
10	Vorlaufradkontakt Pilot wheel contact	116851	2
11	Radkontakt Baugruppe Wheel contact assembly	117406	9
12	Kuppelstange rechts Connecting rod right	117418	20
13	Kuppelstange links Connecting rod left	117419	20
14	Teilesatz Parts set	117420	8
15	Teilesatz Parts set	117423	7
16	Lokboden Loco bottom	117425	10
17	Bremsgestänge Brake leverage	117426	5
18	Kuppelradsatz lackiert Coupling wheelset coated	117431	21
19	Treibradsatz lackiert Driving wheelset coated	117432	22
20	Kuppelradsatz mit Zahnrad lackiert Coupling wheelset with gear coated	117433	22
21	Vorlaufgestell komplett Pilot frame assembly	117435	35
22	Nachlaufgestellfeder Tail truck spring	117441	2
23	Blenden+Bremsbackensatz Bezel and set of brake shoes	117467	4
AC-Wechselstrom 69281			
24	AC-Schleifer kurz AC-wiper short	40500	---
25	Nachlaufradsatz Tail wheelset	108313	14
26	Vorlaufradsatz Pilot wheelset	112108	14
27	Nachlaufgestell kpl. Tail truck assembly	114222	28
28	GF-Schraube M1,6x10 GF-screw M1,6x10	114881	2
29	Radsatz 1 lackiert Wheelset 1 coated	117478	21
30	Kuppelradsatz lackiert Coupling wheelset coated	117479	22
31	Kuppelradatz mit Zahnrad lackiert Coupling wheelset with gear coated	117480	22
32	Vorlaufgestell komplett Pilot frame assembly	117481	34
33	Schleiferauflage Polisher support	117482	2
34	Schleiferkontakt Polisher contact	117483	3



Pos. Nr. Pos.no.	Beschreibung Description	Art.-Nr. Art.no.	Preisgruppe Price bracket
63280	03 ¹⁰		
63281	03 ¹⁰		
69281			
1	Puffer gewölbt Buffer vaulted	88503	4
2	Tenderleitung Tender pipe	94535	4
3	Motorspange Clip for the motor	108264	2
4	Tendergriffstange Handle bar tender	108591	3
5	Linse gross lens big	110738	2
6	Motorbaugruppe Motor assembly	111787	57
7	Teilesatz Parts set	111829	6
8	Modulhalter Modul holder	111877	2
9	Griffstange kurz Handle bar short	114210	3
10	GF-Schraube M1,6x4 GF-screw M1,6x4	114850	2
11	Kohlenkastenaufsatz bekohlt Tender simulated coal	117415	33
12	Tendergrundrahmen Tender base frame	117464	20
13	Kohlekasten Coal box	117465	23
14	Schwungscheibe Abdeckung Flywheel cover	117466	4
15	Tendergehäuse komplett Tender casing assembly	117468	44
16	Tenderlicht unten komplett Tender light under assembly	117469	39
17	Heckleitersatz Ladderset, rear	117472	6
18	Tenderlampe Tender lamp	117473	11
19	Tenderflex komplett Tender flex assembly	117474	34
20	Tenderplatine komplett Printed circuit assembly for tender	117475	56
21	Wasserklappensatz Water hatches set	117476	4
AC-Wechselstrom 69281			
22	AC-Tenderplatine AC-printed circuit tender	117484	56

Symbolische Darstellung
Symbolic Illustration



Symbolische Darstellung
Symbolic Illustration

Pos. Nr. Pos. no.	Beschreibung Description	Art.-Nr. Art. no.	Preisgruppe Price bracket
63280	DB 03 ¹⁰ =		
63281	DB 03 ¹⁰ =		
69281	~		
1	Hafrings.10Stk.10,3-12,8mm Set with traction tires 10 pieces	40069	---
2	Kegeldruckfeder Pin pressure spring	86234	2
3	Zahnrad Z=21 G/M=0.4 Gear Z=21 G/M=0.4	86414	2
4	Schneckenzahnrad doppelt Worm gear double	86419	4
5	Zahnrad Z=24 rot M=0.4 20 Grad Gear Z=24 red M=0.4 20 degree	86516	2
6	Radsatz ohne Zahnrad Wheelset without gear	90454	16
7	Attrappenrahmen klein Push in part set,smal	107808	3
8	Getriebebesatz ohne Zahnäder Gear set without gear	108262	18
9	Getriebeboden Gear bottom	108263	14
10	Radsatz mit Haftreifen und Zahnrad Wheelset with traction tyre with gear	108265	20
11	Zubehörrahmensatz Accessories set	108322	8
12	GF-Schraube M2x10 GF- screw M2x10	114845	2
13	Tendergetriebe komplett Tender gear assembly	115542	25
14	Zurüstbeutel Bag with accessories	117413	24
15	Tafelsatz lackiert Set with number bords	117414	24
AC-Wechselstrom 69281			
16	Hafrings.10Stk. 10,3-12,4mm Set with traction tires 10 pieces	40074	---
17	Tenderradsatz Tender wheelset	108304	18
18	Radsatz mit Hafringen Wheelset with traction tyres	108305	20

Ersatzteile erhalten Sie bei Ihrem Fachhändler,
oder Ihrer Landesvertretung.

You can order your Replacement Parts at your
local dealer, your country representative.