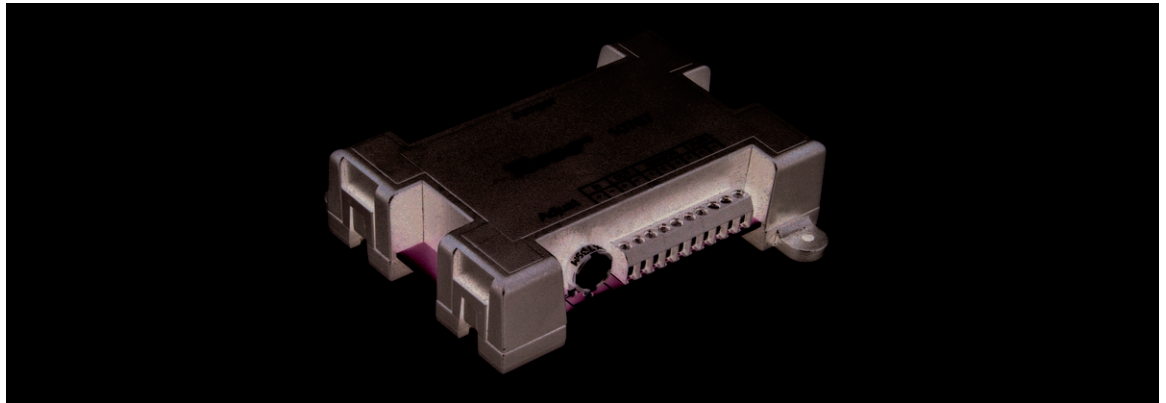


Digital Reverse loop module



Art. No.: 10767

This device allows to operate track pieces such as terminal loops, triangular junctions and turntables even with the internationally standardised two-track - provided that it works on DCC-digital.

Please note that the terminal loop module is designed exclusively for digital operation and does not work in analogue mode.

The terminal loop function can be activated by:

- Closed circuit
- Make-and-break contacts
- replacement: 10797

Specifications:

Measurements

Dimensions (LxWxH)	90 x 64 x 24 mm
--------------------	-----------------