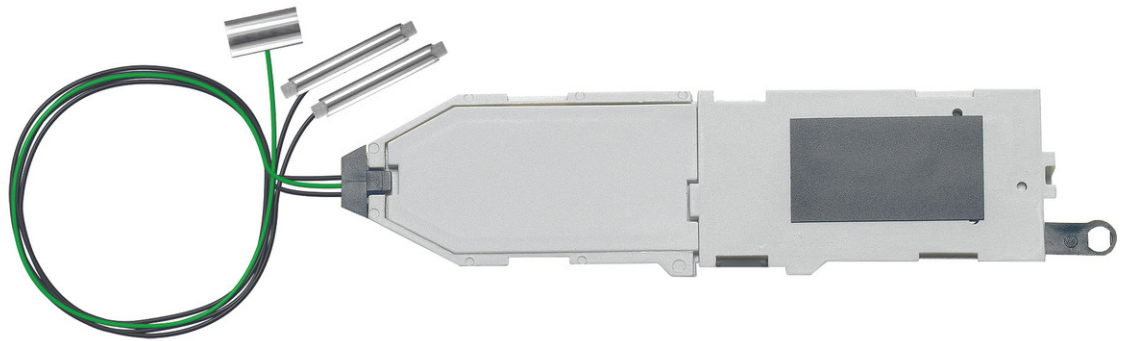


Digital switch drive



Art. No.: 42624

€25,20

Suitable for all ROCO LINE bedding switches. The digital switch drive is simply plugged into the recess on the underside of the switches. The electrical connection is made with two cables directly to the rail profiles. The digital switch drive already includes a DCC-Decoder (the version from production year 2019 on is compatible with RailCom) and can be programmed after installation.

RailCom is a registered trademark of the Lenz GmbH, Gießen.