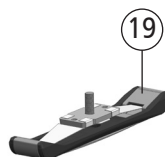
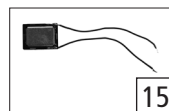
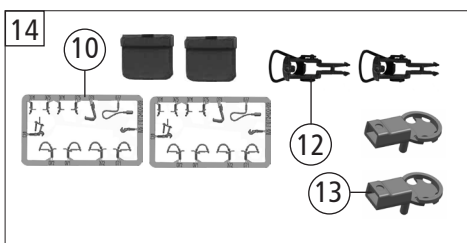
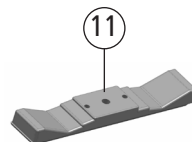
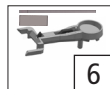
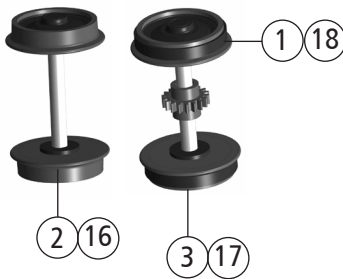
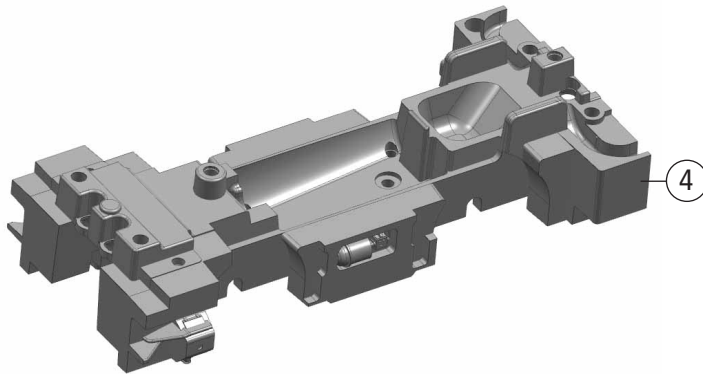
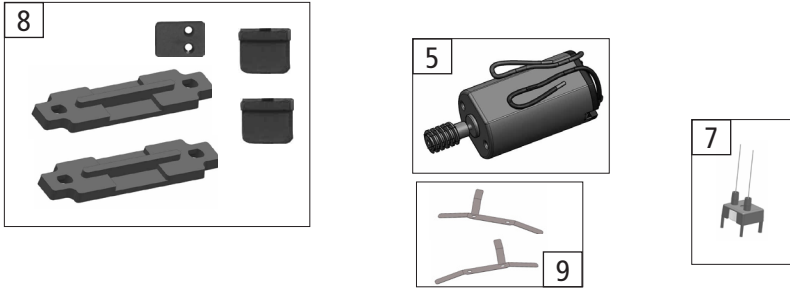


Pos. Nr. Pos.no.	Beschreibung Description	Art.-Nr. Art.no.	Preisgruppe Price bracket
1	Gehäuse kpl. Betr. Nr. 115-4 Body ass. complete Loco no. 115-4	144527	31
2	Führerhaus Driver's cab	144528	24
3	Griff Handle	144523	5
4	Platine Führerstand PCB driver's cab	143782	17
5	TS - Fenster Part set - windows	143783	9
6	Scheibenwischer L+R Wipers L+R	144529	6
7	TS - Griffe Part set - handrails	144530	11
8	TS - Gehäuse Part set - Body	144531	13
9	Platine PCB	143762	38
10	Umlauf Running board	144521	17
11	TS - Luftkessel Part set - Air tank	144522	10
12	TS - Führerhaus Part ste - Driver's cab	143894	9
13	TS - Lichtleiter+Linsen Part set - light conductor + lenses	143774	10
14	TS - Griffe Part ste - Handles	144524	12
15	Puffer rund gewölbt Buffer round curved	88503	5
16	Pufferbohle lang Buffer beam long	144525	6
17	Lokboden Loco floor	144518	12
18	Stirngriff + Lampengeh. Front handle + lamp holder	144532	10
19	PT-Schraube PT - Screw	108137	3
20	GF-Schraube GF - Screw	143760	4
21	GF-Schraube GF - Screw	143761	4

Änderungen in Konstruktion und Ausführung vorbehalten  
We reserve the right to change the construction and specification



72020	DB	BR 333	=	🔊		
78020			=	🔊	~	
Pos. Nr. Pos.no.	Beschreibung Description				Art.-Nr. Art.no.	Preisgruppe Price bracket
1	Haftreifen Traction tyres				40069	---
2	Radsatz o. Zahnrad o. Haftring Wheelset w/o gearwh. w/o tract. tyre				144513	10
3	Radsatz m. Zahnrad m.2 Haftringe Wheelset w. gearwheel w. 2 tr. tyres				144514	12
4	Grundrahmen Base frame				144519	13
5	Motor m. Schnecke Motor with gearwheel				143770	16
6	TS - Dig.Kupplung Part set - dig. coupling				144515	10
7	Spule kpl. Spool complete				144517	13
8	TS - Kontakthalter Part set - Contact holder				144526	7
9	Radkontakt L+R Wheel contact L+R				143776	11
10	TS - Bremsschläuche + Zughaken Part set of brake tubes & coupling hooks				139832	7
11	Schleifergewicht Slider weight				144520	8
12	Standardkupplung Standard coupling				89246	6
13	Kupplungskammer Coupling reception				144534	4
14	Zurüstbeutel Bag of accessories				144533	11
15	Lautsprecher Loudspeaker				129524	14
<b>AC - Wechselstrom</b>						
16	Radsatz o. Zahnrad o. Haftring AC Wheelset w/o gearwh. w/o tract. tyre AC				144535	10
17	Radsatz m. Zahnrad m.2 Haftringe AC Wheelset w. gearwheel w. 2 tr. tyres AC				144536	12
18	Haftreifen Traction tyres				00544007	1
19	Schleifer Slider				86030	14