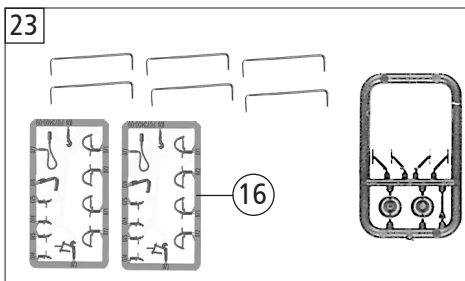
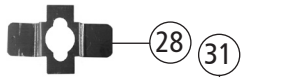
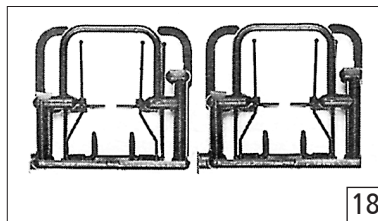
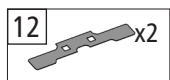
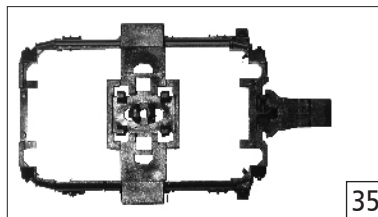
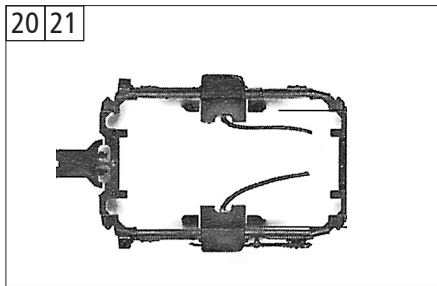
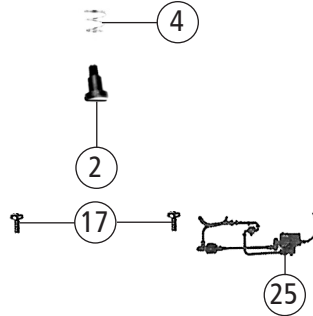
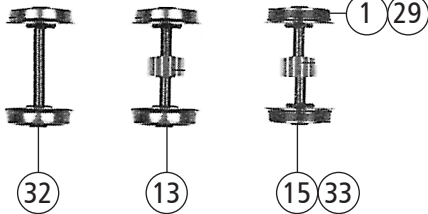
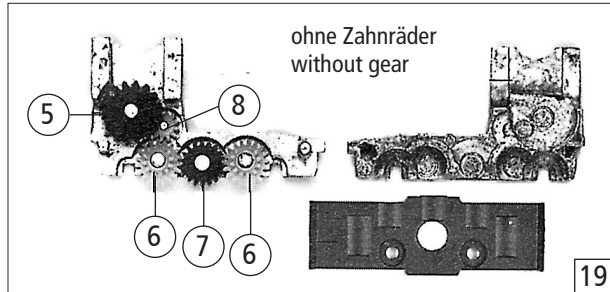
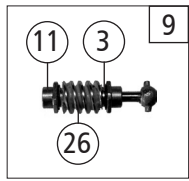


Pos. Nr. Pos.no.	Beschreibung Description	Art.-Nr. Art.no.	Preisgruppe Price bracket
52565	SERSA	=	
52566		=	🔊
58566		~	🔊
1	Gehäuse komplett Nr. Am 847 957-8 Body compl. Loco no. Am 847 957-8	147744	18
2	Kabine komplett Cabin complete	147745	20
3	Platine komplett Printed circuit assembly	141790	19
4	Kabinfenster Cabin window	147746	8
5	Führerstand Drivers cab	128213	8
6	Brückenstecker PLUX-16 Jumper	133241	10
7	Motor Motor	143272	28
8	Steuerrad Steering wheel	147748	3
9	GF - Schraube M2x5 mm GF - Screw	114966	3
10	E-Lokführer E-Locho driver	116668	6
11	Motordistanzplatte Motor spacer plate	117202	3
12	Schienenräumer Railguard	147740	4
13	Grundrahmen Main frame	147736	19
14	Dekoderdeckel Decoder cover	147737	4
15	Puffer flach Buffer flat	147738	3
16	Puffer gewölbt Buffer vaulted	147739	3
17	Schraube M2x16 mm Screw	115094	3
18	Kardanschale kurz Cardan shell short	87129	4
19	Dach Roof	147747	7
20	TS - Linsen Part set lenses	141789	8
21	TS-LED-Abdeckung Part set-LED-covers	141792	5
Sound			
22	Sounddecoder MS450 Plux-22 Sound-decoder	147377	39
23	Lautsprecher Loudspeaker	129524	13
24	Soundbox Soundbox	139681	6
AC - Wechselstrom			
25	Grundrahmen Main frame	147752	19

Änderungen in Konstruktion und Ausführung vorbehalten
We reserve the right to change the construction and specification



Pos. Nr. Pos.no.	Beschreibung Description	Art.-Nr. Art.no.	Preisgruppe Price bracket
52565	SERSA	=	
52566		=	
58566		~	
1	Haftringsatz 10Stk. 8,3-10,2mm Set with traction tires 10 pieces	40068	---
2	FK-Schraube mit Gewindeauslauf FK-Screw with back taper thread	85704	4
3	Beilagscheibe Washer	86108	3
4	Konusfeder Cone spring	86202	3
5	Schneckenzahnrad doppelt Gear double	86419	6
6	Zahnrad Z=19/12 M 0.4 Gear Z=19/12 M 0.4	86424	4
7	Zahnrad Z=18 gerade M=0.4 Gear Z= 18 straight line M=0.4	86460	3
8	Zahnrad Z=12/ M 0.4 Gear Z=12/ M 0.4	86471	3
9	Schneckensatz komplett Worm set ass.	86868	13
10	Gelenkwelle Cardan shaft	87138	4
11	Lager für Schneckenachse Bearing for worm axle	89749	6
12	TS-Radkontakt Part set-Wheel contact	100050	7
13	Radsatz ohne Haftring mit Zahnrad Wheelset without traction tires with gear	147742	11
14	Schneckendeckel Worm cover	94707	4
15	Radsatz mit 2 Haftringen mit Zahnrad Wheelset with 2 traction tires with gear	147743	12
16	TS - Bremsschläuche + Zughaken Part set of brake tubes & coupling hooks	139832	7
17	SK - Schraube M2x5 mm SK - Screw	115205	3
18	Aufstiegsatz Rear ladder set	147750	8
19	Getriebebesatz ohne Zahnräder Gear set without gears	147741	13
20	Drehgestellblende kurzer Vorbau komplett Bogie frame short front end completely	100436	12
21	Drehgestellbl. langer Vorbau komplett Bogie frame long front end completely	100437	12
22	Bremsbacken Brake shoes	100441	4
23	Zurüstbeutel Bag with accessories	147749	13
24	Standardkupplung Standard coupling	89246	6
25	Blendensteckteil Bogie cover plug-in parts	147751	4
26	Schnecke Wormgear	86704	6
27	Kurzkupplung-Vorentkupplung Short coupling- pre-uncoupling	115550	6
AC - Wechselstrom			
28	Kontaktblech Contact plate	108722	4
29	Haftringsatz 10Stk. 10,3-12,4mm Set with traction tires 10 pieces 10,3-12,4	40074	---
30	Schleifer Slider	86030	14
31	Achslager Axle bearing	89883	6
32	HO-Wechselstromradsatz Wheelset AC	90388	7
33	Radsatz mit 2 Haftreifen AC Wheelset w. 2 traction tires AC	90476	12
34	Schleiferhalter Collector holder	147753	4
35	Blende vorne AC Bogie AC	100446	12