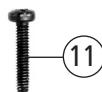
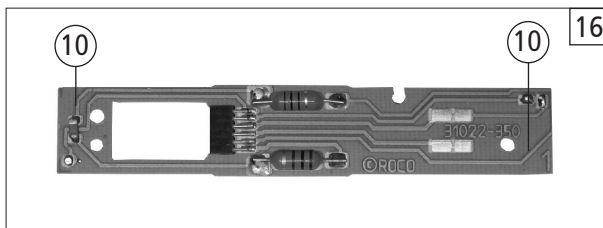
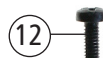
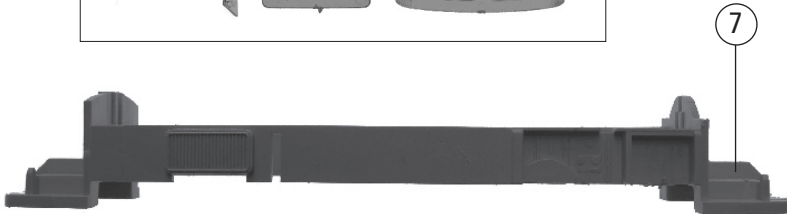
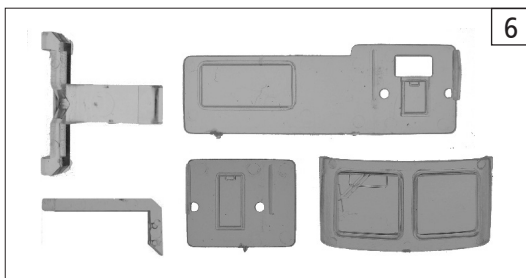
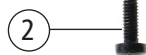
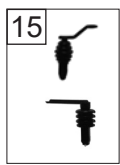
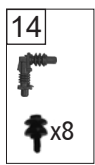
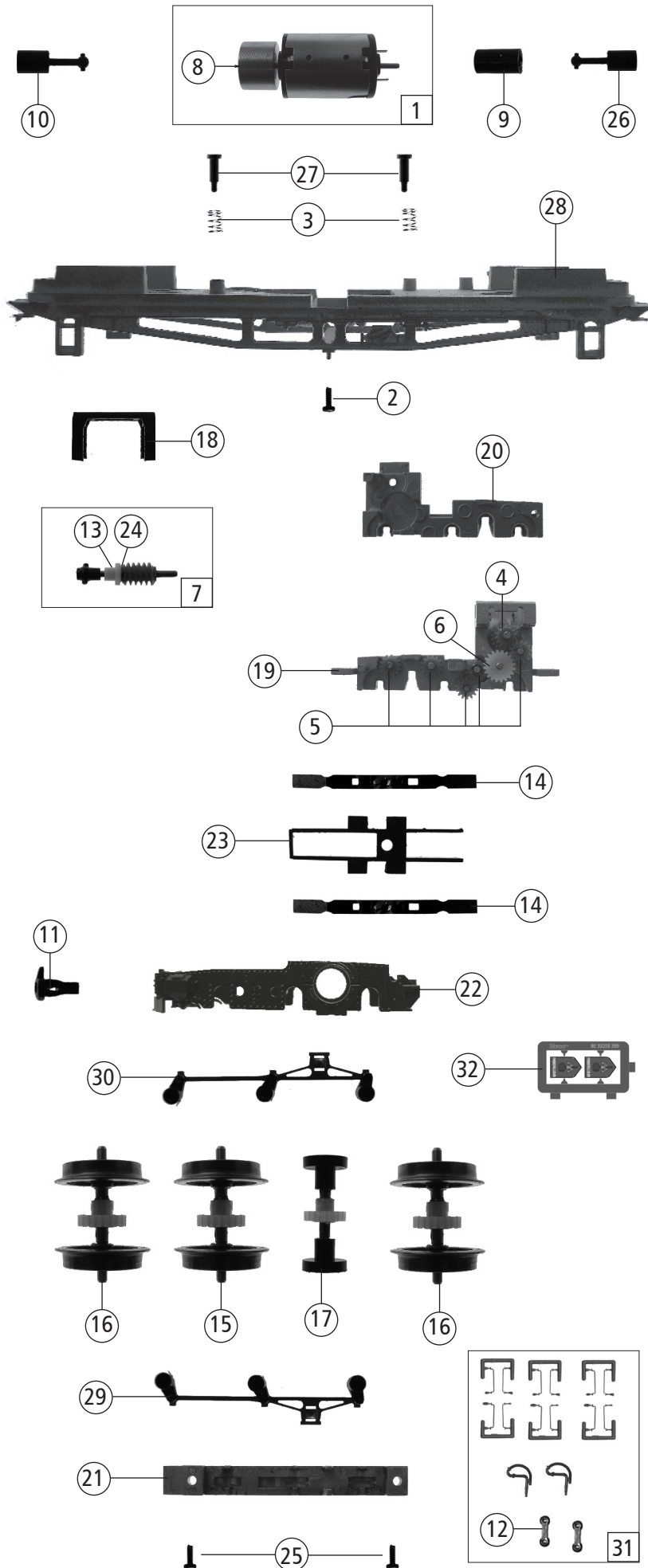


Pos. Nr. Pos. no.	Beschreibung Description	Art.-Nr. Art. no.	Preisgruppe Price bracket
1	Gehäuse kpl. Betr.nr. 1099.012-5 Body ass. compl. Loco No. 1099.012-5	147343	32
2	Schraube M2x5 mm Screw M2x5 mm	85693	3
3	Stromabnehmerantrieb Pantograph drive	97883	3
4	Steckplatine Plug-in pcb	87829	12
5	Lokführer grau Loco driver grey	101208	6
6	TS - Fenster - Lichtleiter Part set of window and light conductor	101634	9
7	Inneneinrichtung lack. Interior fittings painted	101635	5
8	Heizkabel Heating cable	101637	4
9	Sirene Signal horn	147344	3
10	Drahtlampe T3/4 16V 30mA Bulb with leads T3/4 16V 30mA	108616	8
11	GF-Schraube M2x10 mm Self-tapping screw M2x10 mm	114854	3
12	GF-Schraube M2x4 mm Self-tapping screw M2x4 mm	114877	3
13	Gewicht Weight	122091	13
14	Hauptschalter+Isolator 3 Main switch+isolator 3	123930	6
15	Isolator 4+Isolator mit Leitung Isolator 4+isolator with connector	124525	6
16	Platine kpl. Printed circuit board assembly	127901	19
17	Stromabnehmer Pantograph	85307	19
18	Lichtnagel Light pin	127905	3



Änderungen in Konstruktion und Ausführung vorbehalten
We reserve the right to change the construction and specification



33256		ÖBB	Rh 1099	=	
Pos. Nr. Pos. no.	Beschreibung Description	Art.-Nr. Art. no.	Preisgruppe Price bracket		
1	Motor Motor	85054	28		
2	Schraube M1,6x3 mm Screw M1,6x3 mm	85658	3		
3	Druckfeder Pressure spring	86209	3		
4	Schneckenrad Z=19/14 M=0,3 Worm gear wheel Z=19/14 M=0,3	86400	4		
5	Zahnrad Z=14 gerade M=0,3 Gear wheel Z=14 straight M=0,3	86496	3		
6	Zahnrad Z=20/15 M=0,3 Gear wheel Z=20/15 M=0,3	86504	5		
7	Schneckensatz mit Kardankugel Set of worm gear incl. cardan ball	86841	13		
8	Kardanschale 1 Cardan reception 1	87085	3		
9	Kardanschale 2 Cardan reception 2	87086	3		
10	Kardanwelle lang Cardan shaft long	87087	3		
11	Bosna Kupplungshaken kurz Bosna coupling hook short	89260	6		
12	Kupplungsbolzen Coupling bolt	89261	3		
13	Schneckenlager Worm gear bearing	89750	5		
14	Radkontakt Wheel contact	89870	5		
15	Radsatz mit großem Gewicht Wheelset with big weight	90326	10		
16	Radsatz mit kleinem Gewicht Wheelset with small weight	90327	10		
17	Blindwellensatz Jack shaft set	90328	10		
18	Schneckendeckel Worm gear cover	93703	3		
19	Getriebekasten Gear box	93704	12		
20	Getriebedeckel Gear cover	93705	9		
21	Getriebeboden Gear bottom	93706	9		
22	DG-Blende Bogie frame	93707	13		
23	Kontakthalter Contact support	93708	4		
24	Scheibe Washer	112394	4		
25	GF-Schraube M1,6x4 mm Self-tapping screw M1,6x4 mm	114850	3		
26	Kardanwelle kurz Cardan shaft short	123604	3		
27	Bundschraube Flaged screw	123607	4		
28	Grundrahmen Basic frame	147342	16		
29	Treibstangensatz links kpl. Driving rod set left ass.	123609	10		
30	Treibstangensatz rechts kpl. Driving rod set rechts kpl.	123608	10		
31	Zurüstbeutel Bag with accessories	101669	12		
32	Tafelsatz Set of panels	147345	12		