

4496S-A01



4132A-026



4134S-073

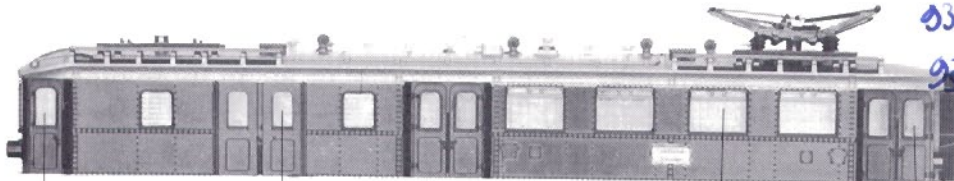
4189S-020

AMSTERDAM AMSTERDAM AMSTERDAM  
 ROTTERDAM ROTTERDAM ROTTERDAM  
 ROTTERDAM ROTTERDAM ROTTERDAM

AMSTERDAM AMSTERDAM AMSTERDAM  
 ROTTERDAM ROTTERDAM ROTTERDAM

**ROCO INTERNATIONAL**  
 04189S - 020

- 85214 4496S-A01 Scherenstrom-  
 abnehmer  
 4132A-026 Isolator für  
 Scherenstrom-  
 abnehmer  
 4134S-073 Schraube  
 4189S-020 Abziehbildsatz 89924
- 4496S-A01 Pantograph  
 4132A-026 Insulator for  
 pantograph  
 4134S-073 Screw  
 4189S-020 Decal set



4189S-009

4189S-012  
 4189S-013

4189S-011

4189S-010

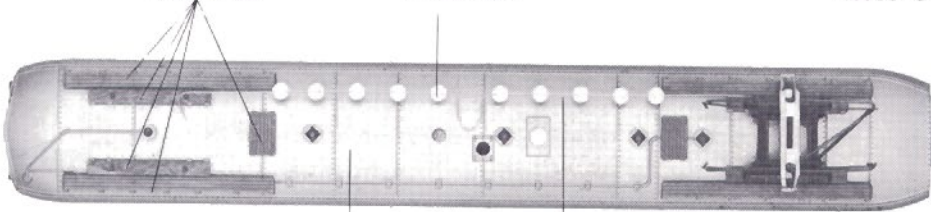
- 93653 4189S-009 Fenster 93652  
 93653 4189S-010 Fenster  
 93269 4189S-011 Fenster 93511  
 93269 4189S-012 Fenster 93269  
 93269 4189S-013 Fenster 93269

- 4189S-009 Glazing  
 4189S-010 Glazing  
 4189S-011 Glazing  
 4189S-012 Glazing  
 4189S-013 Glazing

4189S-A02

4199A-021

4290S-011



4189S-A01

4189S-006

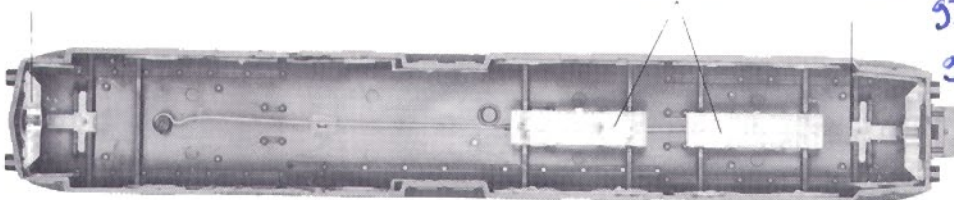
- 93285 4189S-A02 Dachstege kpl.  
 4199A-021 Isolator  
 4290S-011 Faltenbalg  
 4189S-A01 Motorwagen-  
 gehäuse kpl. 93284  
 94037 4189S-006 Dachleitung

- 4189S-A02 Roof gangway set  
 4199A-021 Insulator  
 4290S-011 Concertina walls  
 4189S-A01 Power car body  
 4189S-006 Roof conducting  
 wire set

4189S-014

4189S-016

4189S-015



- 93271 4189S-014 Leuchtstab 93272  
 93271 4189S-015 Leuchtstab  
 93271 4189S-016 Leuchtstab, Dach

- 4189S-014 Light transmission  
 bar  
 4189S-015 Light transmission  
 bar  
 4189S-016 Light transmission  
 bar - roof

4130S-063



4189S-A03

4130S-032



4151B-0



4128S-022

- 99890 4151S-031 Diode 99710  
 4572S-001 Lampe St 2,8



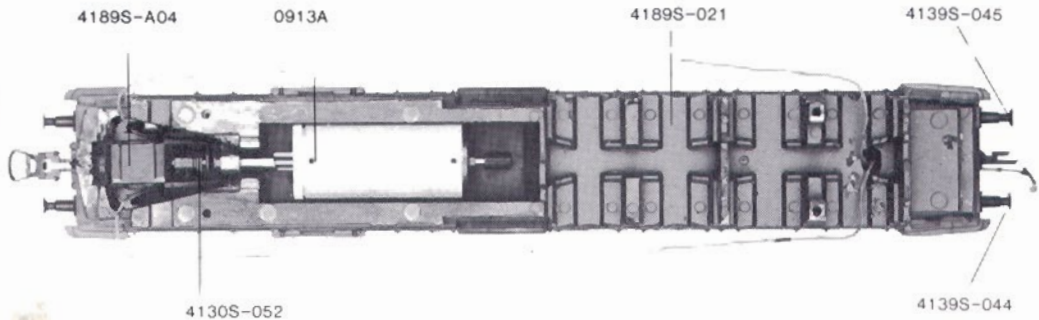
4572S-001

- 4130S-063 Schraube 97699  
 4189S-A03 Kontaktplatte  
 Motorwagen  
 kpl.  
 4130S-032 Feder  
 4128S-022 Umschaltbolzen 99710  
 4151S-031 Diode  
 4572S-001 Lampe St 2,8

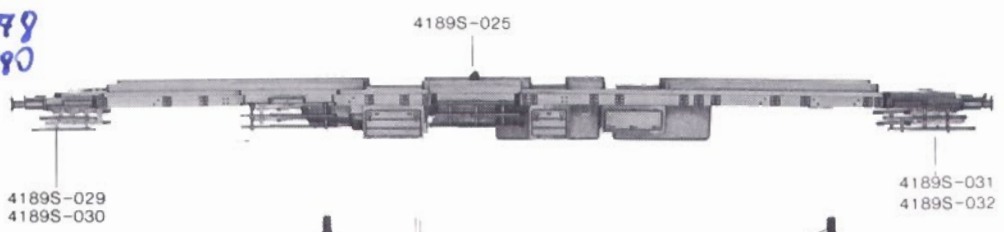
- 4130S-063 Screw  
 4189S-A03 Printed circuit  
 assembly  
 4130S-032 Spring  
 4128S-022 Switch lever  
 4151S-031 Diode  
 4572S-001 Lamp St 2,8

4189

- 93286 4189S-A04 Getriebekasten kpl.
- 0913A Motor 85005
- 93275 4189S-021 Inneneinrichtung MW
- 4139S-044 Puffer, flach 98570
- 8071 4139S-045 Puffer, gewölbt
- 4130S-052 Feder 86206
- 4189S-A04 Gearcase assembly
- 0913A Motor
- 4189S-021 Interior fittings-power car
- 4139S-044 Buffer, flat
- 4139S-045 Buffer, vaulted
- 4130S-052 Spring



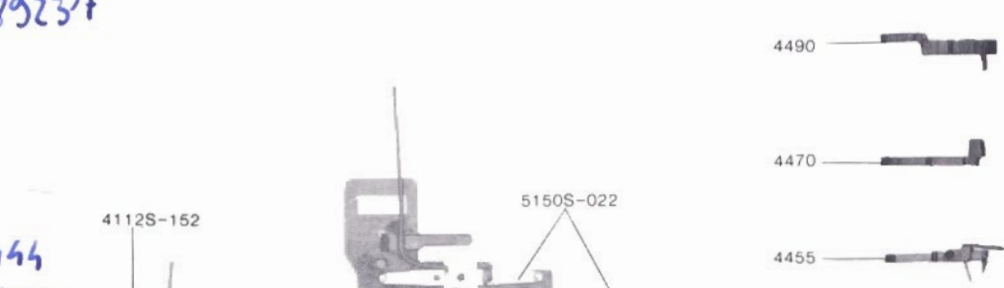
- 93276 4189S-025 Bodenplatte MW
- 4189S-029 Stufe, vorn links 93279
- 93275 4189S-030 Stufe, vorn rechts
- 93274 4189S-031 Stufe, hinten links 93290
- 93274 4189S-032 Stufe, hinten rechts
- 4189S-025 Platform - power car
- 4189S-029 Foot step, front, left
- 4189S-030 Foot step, front, right
- 4189S-031 Foot step, rear, left
- 4189S-032 Foot step, rear, right



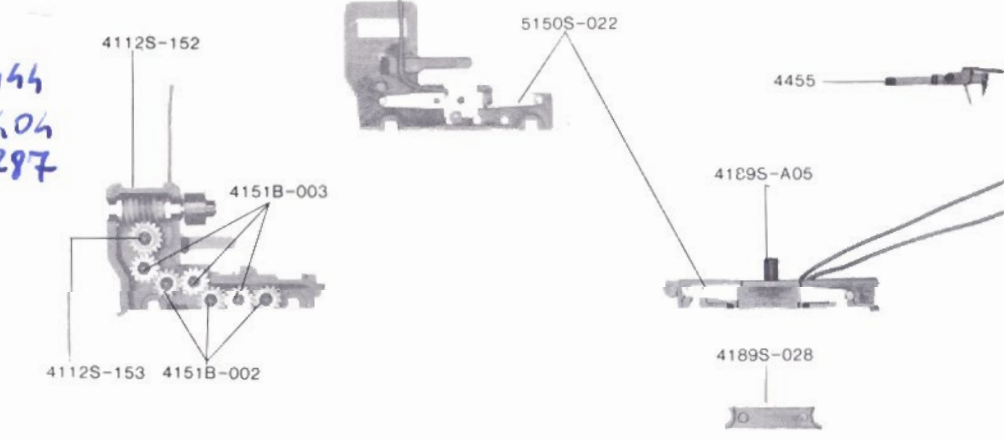
- 86230 4481S-003 Feder
- 4189S-040 Kupplungshalter 93283
- 4481S-003 Spring
- 4189S-040 Coupling holder



- 83243 4490 Kurzkupplung
- 4470 Kupplung, passend zu Fleischmann - hinten 89237
- 83259 4455 Standardkupplung - hinten
- 4490 Short coupling
- 4470 Coupling fitting w/ Fleischmann - rear
- 4455 Standard coupling - rear

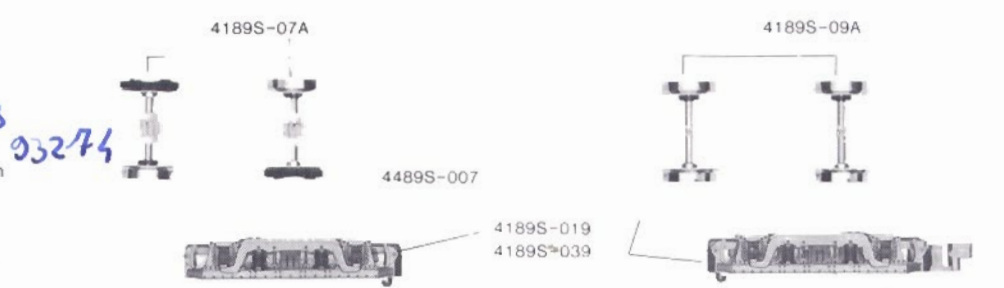


- 86711 4112S-152 Schnecke
- 4112S-153 Zahnrad Z=17R 86444
- 86403 4151B-002 Zahnrad Z=14R
- 89805 4151B-003 Zahnrad Z=14L 86404
- 93278 5150S-022 Radkontakt 93297
- 4189S-A05 Leerlaufgestell mit Kontakten
- 4189S-028 Klemme



- 4112S-152 Worm
- 4112S-153 Gear T=17R
- 4151B-002 Gear T=14R
- 4151B-003 Gear T=14L
- 5150S-022 Wheelwiper
- 4189S-A05 Contact carrier
- 4189S-028 Clamp

- 80331 4189S-07A Halbringradsatz
- 95601 4189S-09A Radsatz 80333
- 93292 4489S-007 Halbring 93274
- 4189S-019 Drehgestellrahmen vorn
- 4189S-039 Drehgestellrahmen hinten



- 4189S-07A Traction tyre set
- 4189S-09A Wheelset
- 4489S-007 Traction tyre
- 4189S-019 Truckframe, front
- 4189S-039 Truckframe, rear

- 89205 4456 Standardkupplung - vorn
- 93237 4469 Kupplung, passend zu Fleischmann - vorn
- 4456 Standard coupling, front
- 4469 Coupling fitting w/ Fleischmann - front

