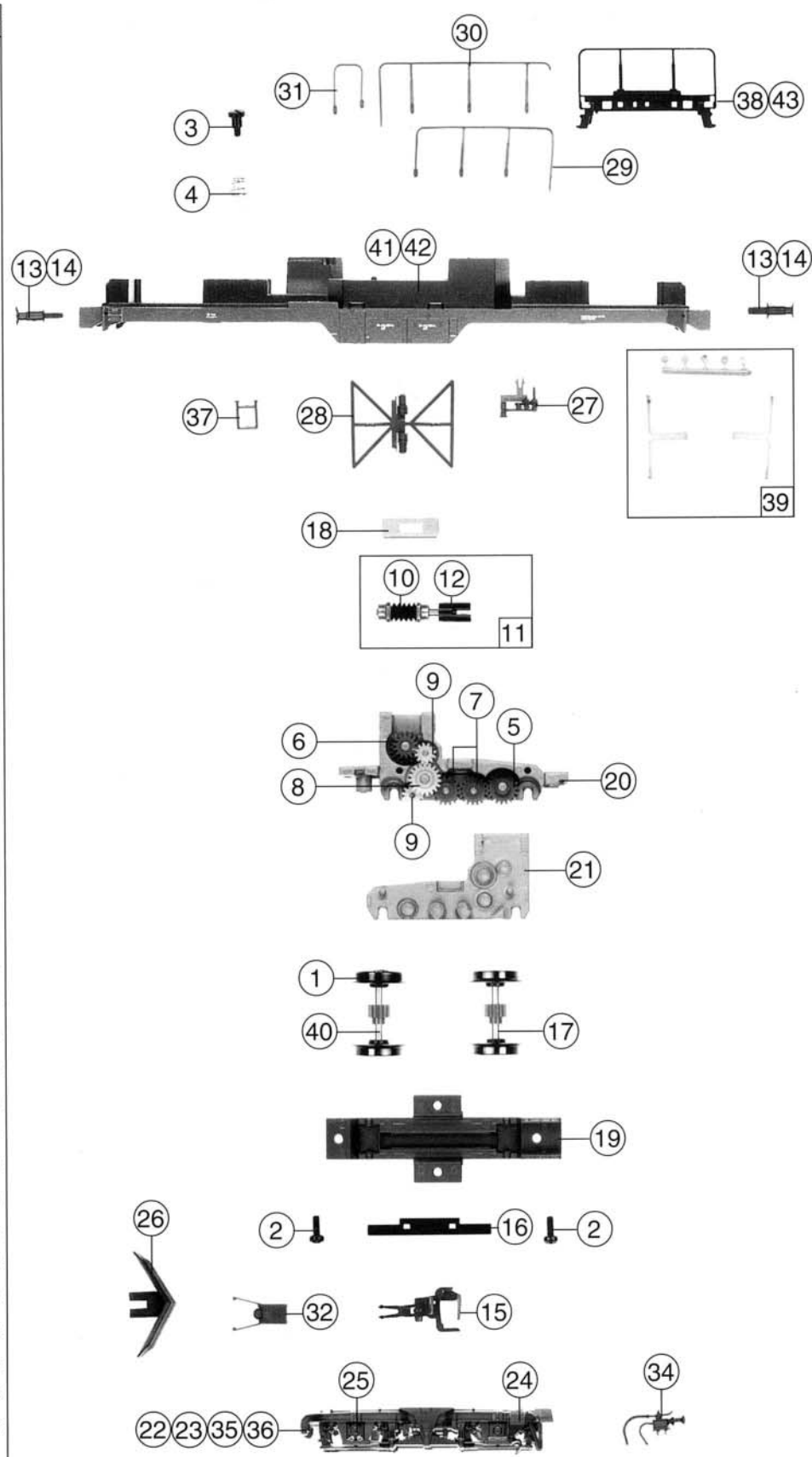


| Pos. Nr. | Text | Art.-Nr. | Page |
|----------|----------------------------------------------------------------------------------------------------------------|----------|------|
| 1 | Motor mit Schwungrscheiben <i>Motor with flywheels</i> | 85049 | 57 |
| 2 | Schraube M 2 x 5 <i>Screw M 2 x 5</i> | 85671 | 2 |
| 3 | Schraube M 2 x 18 <i>Screw M 2 x 18</i> | 85679 | 3 |
| 4 | Kardanschale <i>Cardan bearing</i> | 87109 | 3 |
| 5 | Kardanwelle <i>Cardan shaft</i> | 87161 | 2 |
| 6 | Platine komplett <i>Printed circuit assembly</i> | 87866 | 49 |
| 7 | Gewicht f. 43811 <i>Weight f. 43811</i> | 94215 | 24 |
| 8 | Linse klein f. 43811 <i>Lens little f. 43811</i> | 94235 | 2 |
| 9 | Zurüstbeutel f. 43811 <i>Bag with accessories f. 43811</i> | 94257 | 18 |
| 10 | Webastodeckel f. 43811 <i>Webast cover f. 43811</i> | 94280 | 4 |
| 11 | Webastolüfter f. 43811 <i>Webast ventilator f. 43811</i> | 94281 | 2 |
| 12 | Gitter f. 43811 <i>Grid f. 43811</i> | 94342 | 3 |
| 13 | Hupe f. 43811 <i>Horn f. 43811</i> | 94343 | 3 |
| 14 | Zugfunkantenne f. 43811 <i>Antenna f. 43811</i> | 94344 | 2 |
| 15 | Zurüstbeutel Kupplungen <i>Bag with couplings</i> | 95144 | 22 |
| 16 | Brückenstecker <i>Connector</i> | 100644 | 7 |
| 17 | Lokpfeife f. 43810 <i>Loco whistle f. 43810</i> | 100935 | 2 |
| 18 | Lokführer <i>Loco driver</i> | 101208 | 5 |
| 19 | Drahtlampe <i>Light bulb</i> | 106755 | 10 |
| 20 | Atuppen Rahmen <i>Push in parts set</i> | 107808 | 4 |
| 21 | Fenstersatz f. 43810 <i>Glazing set f. 43810</i> | 107976 | 13 |
| 22 | Inneneinrichtung f. 43810 <i>Interior f. 43810</i> | 108445 | 6 |
| 23 | Inneneinrichtungsdeckel f. 43810 <i>Interior cover f. 43810</i> | 108446 | 4 |
| 24 | Lichtabdeckung <i>Light cover</i> | 108447 | 2 |
| 25 | Teilesatz f. 43810 <i>Part set f. 43810</i> | 110150 | 25 |
| 26 | Gewicht f. 43810 <i>Weight f. 43810</i> | 110152 | 24 |
| 27 | Führerhaus komplett f. 43810 Betr. Nr. 2045.10 <i>Drivers cab assembly f. 43810</i> Betr. No. 2045.10 | 110153 | 41 |
| 28 | Vorbau 1 f. 43810 Betr. Nr. 2045.10 <i>Extension Body 1 f. 43810</i> Betr. No. 2045.10 | 110154 | 36 |
| 29 | Vorbau 2 f. 43810 Betr. Nr. 2045.10 <i>Extension Body 2 f. 43810</i> Betr. No. 2045.10 | 110155 | 36 |
| 30 | Zurüstbeutel f. 43810 <i>Bag with accessories f. 43810</i> | 110156 | 15 |
| 31 | Teilesatz f. 43811 <i>Part set f. 43811</i> | 110157 | 25 |
| 32 | Führerhaus komplett f. 43811 Betr. Nr. 2045.17 <i>Drivers cab assembly f. 43811</i> Betr. No. 2045.17 | 110159 | 41 |
| 33 | Vorbau 1 f. 43811 Betr. Nr. 2045.17 <i>Extension body 1 f. 43811</i> Betr. No. 2045.17 | 110160 | 36 |
| 34 | Vorbau 2 f. 43811 Betr. Nr. 2045.17 <i>Extension body 2 f. 43811</i> Betr. No. 2045.17 | 110161 | 36 |
| 35 | Fenstersatz f. 43811 <i>Glazing set f. 43811</i> | 110162 | 13 |
| 36 | Inneneinrichtung f. 43811 <i>Interior f. 43811</i> | 110506 | 6 |
| 37 | Inneneinrichtungsdeckel f. 43811 <i>Interior cover f. 43811</i> | 110507 | 4 |

| Pos.-Nr. | Text | Art.-Nr. | Preisgruppe |
|----------|---------------------------------------------------------------|----------|-------------|
| 1 | Haftreifenatz <i>Traction tyre set</i> | 85622 | 19 |
| 2 | Schraube M 2 x 5 <i>Screw M 2 x 5</i> | 85671 | 2 |
| 3 | Schraube FK <i>Screw FK</i> | 85704 | 3 |
| 4 | Feder <i>Spring</i> | 86202 | 2 |
| 5 | Zahnrad z=19/14; m 0,4 <i>Gear T=19/14; m 0,4</i> | 86416 | 3 |
| 6 | Zahnrad z=19; m 0,4 <i>Gear T=19; m 0,4</i> | 86417 | 2 |
| 7 | Zahnrad z=17; m 0,4 <i>Gear T=17; m 0,4</i> | 86418 | 2 |
| 8 | Zahnrad z=19/12; m 0,4 <i>Gear T=19/12; m 0,4</i> | 86424 | 3 |
| 9 | Zahnrad z=12; m 0,4 <i>Gear T=12; m 0,4</i> | 86471 | 2 |
| 10 | Schnecke m 0,4 <i>Worm m 0,4</i> | 86703 | 4 |
| 11 | Schneckensatz komplett <i>Wormset assembly</i> | 86797 | 24 |
| 12 | Kardanschale <i>Cardan bearing</i> | 87152 | 2 |
| 13 | Puffer flach <i>Buffer flat</i> | 88624 | 3 |
| 14 | Puffer gewölbt <i>Buffer vaulted</i> | 88625 | 3 |
| 15 | Universal-Kupplung <i>Universal-coupling</i> | 89282 | 5 |
| 16 | Radkontakt <i>Wheel contact</i> | 89876 | 2 |
| 17 | Radsatz <i>Wheelset</i> | 90382 | 18 |
| 18 | Schneckendeckel <i>Worm cover</i> | 94224 | 4 |
| 19 | Getriebeboden <i>Gear bottom</i> | 94239 | 16 |
| 20 | Getriebekasten <i>Gear case</i> | 94246 | 15 |
| 21 | Getriebedeckel <i>Gear cover</i> | 94247 | 15 |
| 22 | Drehgestellblende 1 f. 43810 <i>Bogie frame 1 f. 43810</i> | 94269 | 20 |
| 23 | Blende 2 f. 43810 <i>Bogie frame 2 f. 43810</i> | 94270 | 20 |
| 24 | Sandkasten rechts f. 43810 <i>Sand case right f. 43810</i> | 94272 | 2 |
| 25 | Sandkasten links f. 43810 <i>Sand case left f. 43810</i> | 94273 | 2 |
| 26 | Schienenräumer frei f. 43811 <i>Snow plug f. 43811</i> | 94275 | 6 |
| 27 | Ventile <i>Valves</i> | 94277 | 4 |
| 28 | Untertzug <i>Cross grider</i> | 94278 | 4 |
| 29 | Geländer links <i>Railing left</i> | 94282 | 6 |
| 30 | Geländer rechts <i>Railing right</i> | 94283 | 6 |
| 31 | Geländerbügel <i>Railing bow</i> | 94284 | 3 |
| 32 | Kupplungskammer <i>Coupling chamber</i> | 94286 | 2 |
| 33 | Tachowelle, o. Abb. <i>Speedometer shaft, no ill.</i> | 94287 | 2 |
| 34 | E-Kasten <i>Electronic case</i> | 94288 | 4 |
| 35 | Blende 1 f. 43811 <i>Bogie frame 1 f. 43811</i> | 94337 | 20 |
| 36 | Blende 2 f. 43811 <i>Bogie frame 2 f. 43811</i> | 94338 | 20 |
| 37 | Leiter <i>Ladder</i> | 107965 | 3 |
| 38 | Stirngeländer <i>Front railing</i> | 107966 | 6 |
| 39 | Lichtleitstäbe-Linsensatz <i>Light transmission bar</i> | 107967 | 22 |
| 40 | Radsatz mit Haftreifen <i>Wheelset with traction tyre</i> | 107975 | 20 |
| 41 | Rahmen f. 43810 <i>Frame f. 43810</i> | 110151 | 38 |
| 42 | Zinkalunteil f. 43811 <i>Frame f. 43811</i> | 110158 | 38 |
| 43 | Stirngeländer f. 43811 <i>Front railing f. 43811</i> | 94285 | 6 |



33 o. Abb. / no ill.
Tachowelle
Speedometer shaft